

YR0510

Leader in Biomolecular Solutions for Life Science



Rabbit anti-human IgG FC (YTE mutation) Specific Monoclonal Antibody, Clone 6H2

Catalog No.: YR0510

Basic Information

Molecular Weight

Endotoxin

<1EU/mg (<0.001EU/μg) Determined by LAL gel clotting assay

Sterility

0.2 μm filtration

Aggregation

<5% Determined by SECP

Purity

>95% Determined by SEC-HPLC

Background

Related studies have shown that M252Y/S254T/T256E (YTE) mutations in the Fc region of IgG antibodies can prolong the half-life of therapeutic antibodies, optimize the pharmacokinetic characteristics, and reduce the frequency of administration. We developed Rabbit Anti-human IgG-FC (YTE mutation) Specific Monoclonal Antibody that effectively captures and stably binds to IgG Fc segment YTE mutants. The YTE mutant for therapeutic IgG has important application value in pharmacodynamic/pharmacokinetic studies and detection technology.

Reported Applications

ELISA

Immunogen Information

Clone

6H2

Isotype

IgG1

Immunogen

Human IgG Fc (YTE)

Recommended Isotype Control(s)

Recommended Dilution Buffer

1×PBS pH 7.3

Contact



www.abclonal.com

Product Information

Production

Purified from cell culture supernatant in an animal-free facility

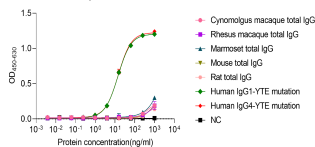
Purification

Protein A/G

Storage

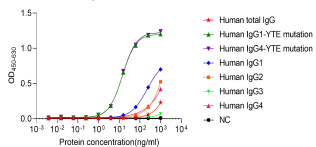
Store at 2 - 8°C. 2 - 8°C for up to 4 weeks and -80°C for long term storage (Avoid repeated freezing and thawing)

Rabbit Anti-human IgG-FC(YTE mutation) Specific Monoclonal Antibody (Clone 6H2)

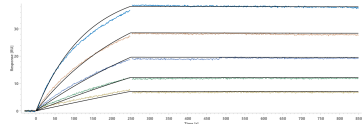


A microtiter plate was coated overnight with Rabbit Anti-human IgG-FC (YTE mutation) Specific Monoclonal Antibody (Clone 6H2) at a concentration of 1 µg/mL. After washing and blocking with PBST + 5% skim milk, increasing concentrations of various biotinylated antibodies was added. Horseradish Peroxidase conjugated Neutravidin, (Thermo Fisher, 31001) was used for final detection.

Rabbit Anti-human IgG-FC(YTE mutation) Specific Monoclonal Antibody (Clone 6H2)



A microtiter plate was coated overnight with Rabbit Anti-human IgG-FC (YTE mutation) Specific Monoclonal Antibody (Clone 6H2) at a concentration of 1 µg/mL. After washing and blocking with PBST + 5% skim milk, increasing concentrations of various biotinylated antibodies was added. Horseradish Peroxidase conjugated Neutravidin, (Thermo Fisher, 31001) was used for final detection.



Rabbit Anti-human IgG-FC (YTE mutation) Specific Monoclonal Antibody (Clone 6H2) captured on Protein A Chip can bind Human IgG1-FC (YTE) mutation with an affinity constant of 0.2 nM as determined in SPR assay.