

YR0505

Leader in Biomolecular Solutions for Life Science



# Rabbit anti-Human IgG Specific Monoclonal Antibody, clone 1F1 (minimum binding to cyno/Ms/rat IgG)

Catalog No.: YR0505

## Basic Information

### Molecular Weight

### Endotoxin

<1EU/mg (<0.001EU/μg) Determined by LAL gel clotting assay

### Sterility

0.2 μm filtration

### Aggregation

<5% Determined by SECP

### Purity

>95% Determined by SDS-PAGE

## Background

Rabbit anti-Human IgG Specific Monoclonal Antibody clone 1F1 is a recombinant rabbit Monoclonal antibody, that recognizes human immunoglobulin isotypes (IgG1, IgG2, IgG3, IgG4), total IgG. It does not recognize Cynomolgus macaque total IgG, Rhesus macaque total IgG, Marmoset total IgG, Mouse total IgG, Rat total IgG.

## Reported Applications

ELISA

## Immunogen Information

### Clone

1F1

### Isotype

IgG1

### Immunogen

Human IgG Fab

### Recommended Isotype Control(s)

### Recommended Dilution Buffer

1×PBS pH 7.3

## Contact



[www.abclonal.com](http://www.abclonal.com)

## Product Information

### Production

Purified from cell culture supernatant in an animal-free facility

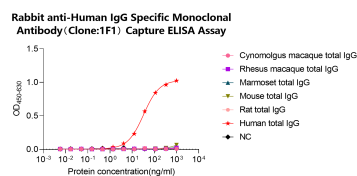
### Purification

Protein A/G

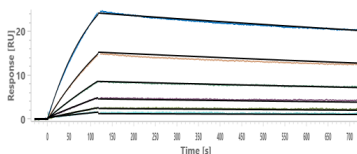
### Storage

Store at 2 - 8°C. 2 - 8°C for up to 4 weeks and -80°C for long term storage (Avoid repeated freezing and thawing)

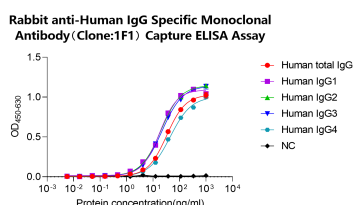
# Validation Data



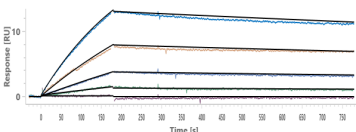
Capture ELISA binding curve demonstrating the recognition of Rabbit anti-Human IgG Specific Monoclonal Antibody. A microtiter plate was coated overnight with Rabbit anti-Human IgG Specific Monoclonal Antibody (clone 1F1) at a concentration of 2  $\mu\text{g/mL}$ . After washing and blocking with PBST + 5% skim milk, increasing concentrations of various biotinylated antibodies was added. Horseradish Peroxidase conjugated Neutravidin (Thermo Fisher, 31001) was used for final detection.



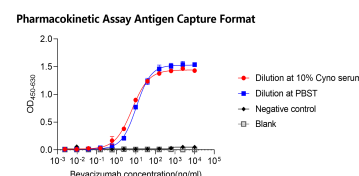
Rabbit anti-Human IgG Specific Monoclonal Antibody (Clone 1F1) captured on C5 Chip can bind Human IgG1 with an affinity constant of 10.42 nM as determined in SPR assay.



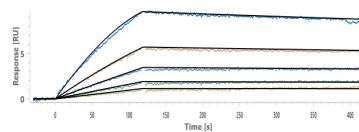
Capture ELISA binding curve demonstrating the recognition of Rabbit anti-Human IgG Specific Monoclonal Antibody. A microtiter plate was coated overnight with Rabbit anti-Human IgG Specific Monoclonal Antibody (clone 1F1) at a concentration of 2  $\mu\text{g/mL}$ . After washing and blocking with PBST + 5% skim milk, increasing concentrations of various biotinylated antibodies was added. Horseradish Peroxidase conjugated Neutravidin (Thermo Fisher, 31001) was used for final detection.



Rabbit anti-Human IgG Specific Monoclonal Antibody (Clone 1F1) captured on C5 Chip can bind Human IgG3 with an affinity constant of 18.26 nM as determined in SPR assay



A microtiter plate was coated overnight with VEGF at a concentration of 2  $\mu\text{g/mL}$ . After washing and blocking with PBST + 5% skim milk, 10% cynomolgus macaque serum was added spiked with increasing concentrations of bevacizumab (hIgG1 kappa)(from 10  $\mu\text{g/mL}$ ). Clone 1F1 was added. Another unrelated rabbit mAb used for negative control. Detection was performed using HRP conjugated goat anti-rabbit 2nd Ab. No cynomolgus serum added sample is used as control.



Rabbit anti-Human IgG Specific Monoclonal Antibody (Clone 1F1) captured on C5 Chip can bind Human IgG4 with an affinity constant of 5.07 nM as determined in SPR assay.