

YR0504

Leader in Biomolecular Solutions for Life Science



Rabbit anti-Human IgG Specific Monoclonal Antibody, clone 1C1 (minimum binding to Monkey/Mouse/Rat IgG)

Catalog No.: YR0504

Basic Information

Molecular Weight

150kDa

Endotoxin

<1EU/mg (<0.001EU/μg) Determined by LAL gel clotting assay

Sterility

0.2 μm filtration

Aggregation

<5% Determined by SECP

Purity

>95% Determined by SDS-PAGE

Background

Rabbit anti-Human IgG Specific Monoclonal Antibody clone 1C1 is a recombinant rabbit Monoclonal antibody, Capture ELISA binding experiment results that recognizes human immunoglobulin isotypes (IgG1, IgG2, IgG3, IgG4), IgG-Fab, total IgG. It exhibits minimum binding Cynomolgus macaque total IgG, Rhesus macaque total IgG, Marmoset total IgG, Mouse total IgG, Rat total IgG.

Reported Applications

ELISA, SPR

Immunogen Information

Clone

1C1

Isotype

Rabbit IgG1

Immunogen

Recommended Isotype Control(s)

Recommended Dilution Buffer

1×PBS pH 7.3

Contact



www.abclonal.com

Product Information

Production

Purified from cell culture supernatant in an animal-free facility

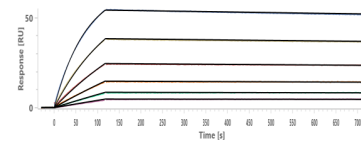
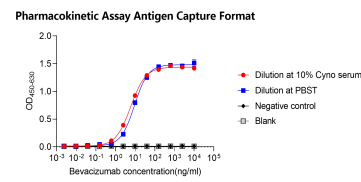
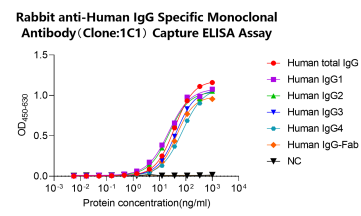
Purification

Protein A/G

Storage

Store at 2 - 8°C. 2 - 8°C for up to 4 weeks and -80°C for long term storage (Avoid repeated freezing and thawing)

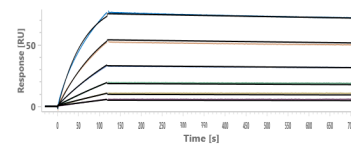
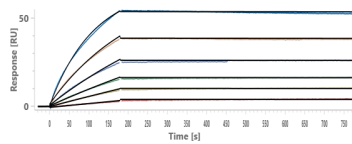
Validation Data



Capture ELISA binding curve demonstrating the recognition of Rabbit anti-Human IgG Specific Monoclonal Antibody. A microtiter plate was coated overnight with Rabbit anti-Human IgG Specific Monoclonal Antibody (clone 1C1) at a concentration of 2 µg/mL. After washing and blocking with PBST + 5% skim milk, increasing concentrations of various biotinylated antibodies was added. Horseradish Peroxidase conjugated Neutravidin (Thermo Fisher, 31001) was used for final detection.

A microtiter plate was coated overnight with VEGF at a concentration of 2 µg/mL. After washing and blocking with PBST + 5% skim milk, 10% cynomolgus macaque serum was added spiked with increasing concentrations of bevacizumab (hIgG1 kappa) (from 10 µg/mL). Clone 1C1 was added. Another unrelated rabbit mAb used for negative control. Detection was performed using HRP conjugated goat anti-rabbit 2nd Ab. No cynomolgus serum added sample is used as control.

Rabbit anti-Human IgG Specific Monoclonal Antibody (Clone 1C1) captured on C5 Chip can bind Human IgG1 with an affinity constant of 0.79 nM as determined in SPR assay.



Rabbit anti-Human IgG Specific Monoclonal Antibody (Clone 1C1) captured on C5 Chip can bind Human IgG3 with an affinity constant of 0.22 nM as determined in SPR assay.

Rabbit anti-Human IgG Specific Monoclonal Antibody (Clone 1C1) captured on C5 Chip can bind Human IgG4 with an affinity constant of 1.64 nM as determined in SPR assay.