

RP10167LQ

Leader in Biomolecular Solutions for Life Science



Recombinant Human SUMO-2 protein

Catalog No.: RP10167LQ **Recombinant**

Sequence Information

Species	Gene ID	Swiss Prot
<i>E. coli</i>	6613	P61956

Tags

No Tag

Synonyms

HSMT3; SMT3B; SMT3H2; SUMO3;
Smt3A;SUMO2;SMT3B;SMT3H2;SUMO
3;Smt3A

Product Information

Source	Purification
<i>E. coli</i>	≥ 90 % as determined by SDS-PAGE.

Endotoxin

Please contact us for more information.

Formulation

20 mM Tris, 150 mM NaCl, 2 mM βME, 10% Glycerol

Reconstitution

Background

SUMO (small Ub-related modifier) is a Ub-like protein. Three types of SUMO are most commonly studied, SUMO 1, SUMO 2, and SUMO 3. SUMO 2 and SUMO 3 are almost identical isoforms and thus share many functions. Like Ub, SUMO can be conjugated to its target proteins as a polymeric chain. However, SUMO 1 forms chains inefficiently as compared to SUMO 2 and SUMO 3. SUMO is conjugated to target proteins by the E1 (SAE1/SAE2), E2 (Ube2I or Ubc9), E3 (RanBP2/Nup358, amongst others). Protein sumoylation is involved in many cellular processes including gene transcription.

Basic Information

Description

Bio-Activity

Shipping

The product is shipped at ambient temperature. Upon receipt, store it immediately at the temperature recommended below.

Operational Notes

For your safety and health, please wear a lab coat and disposable gloves for handling.

Storage

Store at -70°C. This product is stable at ≤ -70°C for up to 1 year from the date of receipt. For optimal storage, aliquot into smaller quantities after centrifugation and store at recommended temperature. Avoid repeated freeze-thaw cycles. Avoid repeated freeze/thaw cycles.

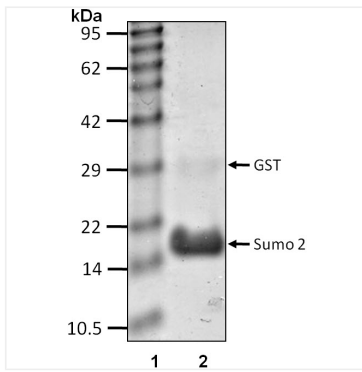
Contact



www.abclonal.com

* For your safety and health, please wear a lab coat and disposable gloves when handling.

Validation Data



Recombinant Human SUMO-2 protein was determined by SDS-PAGE under reducing conditions with Coomassie Blue.