

RP10160LQ

Leader in Biomolecular Solutions for Life Science



Recombinant Human Ubiquitin thioesterase OTU1 protein

Catalog No.: RP10160LQ

Recombinant

Sequence Information

Species	Gene ID	Swiss Prot
<I>E. coli</I>	55432	Q5VVQ6

Tags

No Tag

Synonyms

YOD1;DUBA8;OTUD2;PRO0907

Product Information

Source

<I>E. coli</I>

Purification

~ 90% by SDS-PAGE

Endotoxin

Formulation

20 mM Tris, 150 mM NaCl, 2 mM β ME, 10% Glycerol

Reconstitution

Background

OTUD2 belongs to the OTU (ovarian tumour) family of deubiquitinating enzymes. OTUD2 cleaves K-11, 27, 29 or 33-linked polyubiquitin chains. It could be involved in regulating endoplasmic reticulum-associated degradation (ERAD) of misfolded luminal proteins.

Basic Information

Description

Bio-Activity

Storage

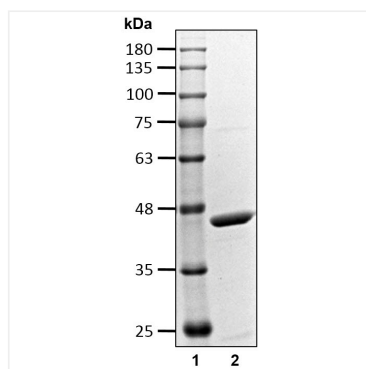
Store at -70°C. This product is stable at $\leq -70^{\circ}\text{C}$ for up to 1 year from the date of receipt. For optimal storage, aliquot into smaller quantities after centrifugation and store at recommended temperature. Avoid repeated freeze-thaw cycles. Avoid repeated freeze/thaw cycles.

Contact



www.abclonal.com

Validation Data



Recombinant human Ubiquitin thioesterase OTU1 protein was determined by SDS-PAGE with Coomassie Blue.