

RP10160

Leader in Biomolecular Solutions for Life Science



# Recombinant human Ubiquitin thioesterase OTU1 protein

Catalog No.: RP10160 **Recombinant**

## Sequence Information

**Species**    **Gene ID**    **Swiss Prot**  
Human

**Tags**  
No Tag

**Synonyms**

## Product Information

**Source**                      **Purification**  
<I>E. coli</I>

**Endotoxin**

### Formulation

Supplied in 20 mM Tris, 150 mM NaCl, 2 mM BME, 10% Glycerol. Contact us for customized product form or formulation.

**Reconstitution**

## Background

OTUD2 belongs to the OTU (ovarian tumour) family of deubiquitinating enzymes. OTUD2 cleaves K-11, 27, 29 or 33-linked polyubiquitin chains. It could be involved in regulating endoplasmic reticulum-associated degradation (ERAD) of misfolded luminal proteins.

## Basic Information

**Description**

**Bio-Activity**

### Storage

This product is stable at  $\leq -70^{\circ}\text{C}$  for up to 6 months from the date of receipt.  
<br/>For optimal storage, aliquot into smaller quantities after centrifugation and store at recommended temperature.  
Avoid repeated freeze/thaw cycles.

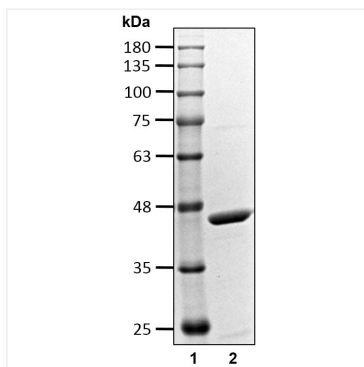
## Contact



[www.abclonal.com](http://www.abclonal.com)

## Validation Data

---



Recombinant human OTUD2 Protein was determined by SDS-PAGE with Coomassie Blue.