

RP10100LQ

Leader in Biomolecular Solutions for Life Science



Recombinant Human Deubiquitinase DESI2 protein

Catalog No.: RP10100LQ

Recombinant

Sequence Information

Species	Gene ID	Swiss Prot
<i>E. coli</i>	51029	Q9BSY9

Tags

GST Tag

Synonyms

DESI2;C1orf121;CGI-146;DESI;DeSI-2;FAM152A;PNAS-4;PPPDE1

Product Information

Source

E. coli

Purification

~90% by SDS-PAGE

Endotoxin

Formulation

20 mM Tris, 150 mM NaCl, 2 mM β ME, 10% Glycerol

Reconstitution

Background

DESI-2 (desumoylating isopeptidase 2, also called Permuted Papain fold Peptidases of DsRNA viruses and Eukaryotes (PPPDE1)) and DESI-1 (also called PPPDE2) contain a Ub-binding domain and a cysteine protease domain. They catalyze both desumoylating and deubiquitinating activities.

Basic Information

Description

Bio-Activity

Storage

Store at -70°C . This product is stable at $\leq -70^{\circ}\text{C}$ for up to 1 year from the date of receipt. For optimal storage, aliquot into smaller quantities after centrifugation and store at recommended temperature. Avoid repeated freeze-thaw cycles. Avoid repeated freeze/thaw cycles.

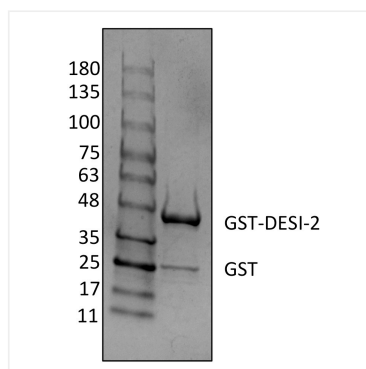
Contact



www.abclonal.com

* For your safety and health, please wear a lab coat and disposable gloves when handling.

Validation Data



Recombinant human Deubiquitinase
DESI2 protein was determined by
SDS-PAGE with Coomassie Blue.