

RP10060LQ

Leader in Biomolecular Solutions for Life Science



# Recombinant Human Ubiquitin-conjugating enzyme E2 variant 2/UBE2V2 protein

Catalog No.: RP10060LQ

Recombinant

## Sequence Information

Species	Gene ID	Swiss Prot
E. coli	7336	Q15819

### Tags

His Tag

### Synonyms

UBE2V2;DDVIT1;DDVIT-1;EDAF-1;EDPF-1;EDPF1;MMS2;UEV-2;UEV2

## Product Information

### Source

E. coli

### Purification

~95% by SDS-PAGE

### Endotoxin

### Formulation

20 mM Tris, 150 mM NaCl, 2 mM  $\beta$ ME, 10% Glycerol

### Reconstitution

## Background

Ube2V2 is an E2 enzyme, which is part of the E1, E2, and E3 cascade responsible for ubiquitination of protein substrates. Ube2V2 is the human homolog of yeast Mms2 and shares 50% amino acid sequence identity. Its main function is to be used in DNA repair. Ube2V2 forms a heterodimer with the human homolog of Ubc13 (an E2). This complex promotes formation of K63-linked polyUb chains.

## Basic Information

### Description

### Bio-Activity

### Storage

Store at  $-70^{\circ}\text{C}$ . This product is stable at  $\leq -70^{\circ}\text{C}$  for up to 1 year from the date of receipt. For optimal storage, aliquot into smaller quantities after centrifugation and store at recommended temperature. Avoid repeated freeze-thaw cycles. Avoid repeated freeze/thaw cycles.

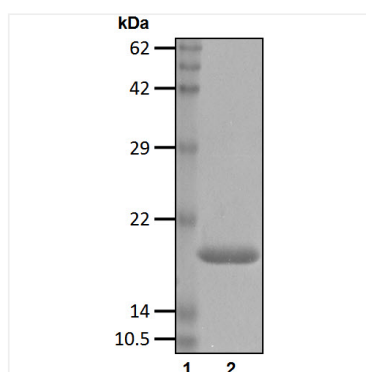
## Contact



[www.abclonal.com](http://www.abclonal.com)

## Validation Data

---



Recombinant human Ubiquitin-conjugating enzyme E2 variant 2/UBE2V2 protein was determined by SDS-PAGE with Coomassie Blue.