

RP10056LQ

Leader in Biomolecular Solutions for Life Science



# Recombinant Human Ubiquitin-conjugating enzyme E2 R2/UBE2R2 protein

Catalog No.: RP10056LQ **Recombinant**

## Sequence Information

Species	Gene ID	Swiss Prot
<i>E. coli</i>	54926	Q712K3

### Tags

His Tag

### Synonyms

UBE2R2;CDC34B;E2-CDC34B;UBC3B

## Product Information

Source	Purification
<i>E. coli</i>	≥ 90 % as determined by SDS-PAGE.

### Endotoxin

Please contact us for more information.

### Formulation

20 mM Tris, 150 mM NaCl, 2 mM βME, 10% Glycerol

### Reconstitution

## Background

Ube2R2 is an E2 enzyme, which is part of the E1, E2, and E3 cascade responsible for ubiquitination of protein substrates. Ube2R2 is phosphorylated by CK2 before it can bind to SCF (Skp1, Cul1, F-box) subunit β-TrCP. This E2 catalyzes K48 – linked Ub chains, which when conjugated to substrates, are targeted to the 26S proteasome for degradation.

## Basic Information

### Description

### Bio-Activity

### Shipping

The product is shipped at ambient temperature. Upon receipt, store it immediately at the temperature recommended below.

### Operational Notes

For your safety and health, please wear a lab coat and disposable gloves for handling.

### Storage

Store at -70°C. This product is stable at ≤ -70°C for up to 1 year from the date of receipt. For optimal storage, aliquot into smaller quantities after centrifugation and store at recommended temperature. Avoid repeated freeze-thaw cycles. Avoid repeated freeze/thaw cycles.

## Contact

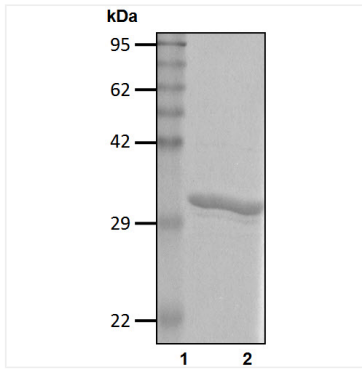


[www.abclonal.com](http://www.abclonal.com)

\* For your safety and health, please wear a lab coat and disposable gloves when handling.

## Validation Data

---



Recombinant Human Ubiquitin-conjugating enzyme E2 R2/UBE2R2 protein was determined by SDS-PAGE under reducing conditions with Coomassie Blue.