

RP10055LQ

Leader in Biomolecular Solutions for Life Science



# Recombinant Human Ubiquitin-conjugating enzyme E2 R1/UBE2R1 protein

Catalog No.: RP10055LQ **Recombinant**

## Sequence Information

Species	Gene ID	Swiss Prot
<i>E. coli</i>	997	P49427

**Tags**  
His Tag

## Synonyms

CDC34;E2-  
CDC34;UBC3;UBCH3;UBE2R1; UBC3;  
UBCH3; UBE2R1

## Product Information

Source	Purification
<i>E. coli</i>	≥ 90 % as determined by SDS-PAGE.

## Endotoxin

Please contact us for more information.

## Formulation

20 mM Tris, 150 mM NaCl, 2 mM βME, 10% Glycerol

## Reconstitution

## Background

Ube2R1 (UbcH3) is an E2 enzyme, which is part of the E1, E2, and E3 cascade responsible for ubiquitination of protein substrates. Ube2R1 was first discovered during screening for cell cycle regulatory mutations that occur in yeast. While Ube2R1 is able to create diubiquitin chains by itself, it works far more efficiently and effectively with the E3 ligase Skp1 (S- phase kinase- associated protein 1)/cullin/F-box, also known as SCF, to promote substrate polyubiquitination.

## Basic Information

### Description

### Bio-Activity

### Shipping

The product is shipped at ambient temperature. Upon receipt, store it immediately at the temperature recommended below.

### Operational Notes

For your safety and health, please wear a lab coat and disposable gloves for handling.

### Storage

Store at -70°C. This product is stable at ≤ -70°C for up to 1 year from the date of receipt. For optimal storage, aliquot into smaller quantities after centrifugation and store at recommended temperature. Avoid repeated freeze-thaw cycles. Avoid repeated freeze/thaw cycles.

## Contact

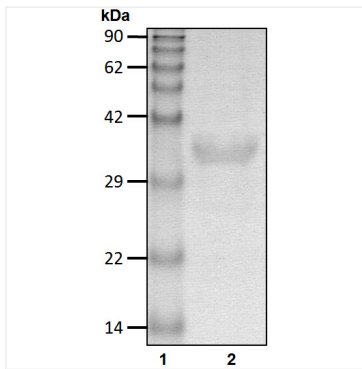


[www.abclonal.com](http://www.abclonal.com)

\* For your safety and health, please wear a lab coat and disposable gloves when handling.

## Validation Data

---



Recombinant Human Ubiquitin-conjugating enzyme E2 R1/UBE2R1 protein was determined by SDS-PAGE under reducing conditions with Coomassie Blue.