

RP10054LQ

Leader in Biomolecular Solutions for Life Science



# Recombinant Human Ubiquitin-conjugating enzyme E2 Q2/UBE2Q2 protein

Catalog No.: RP10054LQ **Recombinant**

## Sequence Information

Species	Gene ID	Swiss Prot
<I>E. coli</I>	92912	Q8WVN8

**Tags**  
His Tag

**Synonyms**  
UBE2Q2

## Product Information

Source	Purification
<I>E. coli</I>	~95% by SDS-PAGE

**Endotoxin**

**Formulation**  
20 mM Tris, 150 mM NaCl, 2 mM  $\beta$ ME,  
10% Glycerol

**Reconstitution**

## Background

Ube2Q2 is an E2 enzyme, which is part of the E1, E2, and E3 cascade responsible for ubiquitination of protein substrates. Ube2Q2 is thought to play a key role in regulating mitotic stages in cells. Its discovery was in connection with an arrest in the mitotic cell cycle. Inactivating this E2 prohibits the cell from continuing on past prophase. In cases of head and neck squamous cell carcinoma, there is an elevated level of Ube2Q2 in the cancerous tissues. Also when the expression levels decreased, the cancerous cells were found to have a resistance to chemotherapeutic agents.

## Basic Information

**Description**

**Bio-Activity**

**Storage**

Store at  $-70^{\circ}\text{C}$ . This product is stable at  $\leq -70^{\circ}\text{C}$  for up to 1 year from the date of receipt. For optimal storage, aliquot into smaller quantities after centrifugation and store at recommended temperature. Avoid repeated freeze-thaw cycles. Avoid repeated freeze/thaw cycles.

## Contact

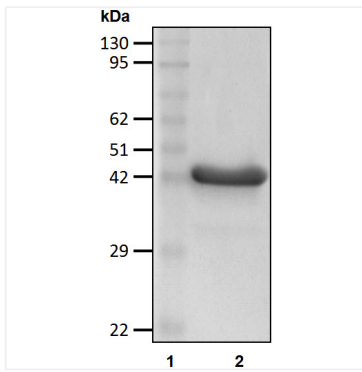


[www.abclonal.com](http://www.abclonal.com)

\* For your safety and health, please wear a lab coat and disposable gloves when handling.

## Validation Data

---



Recombinant human Ubiquitin-conjugating enzyme E2 Q2/UBE2Q2 protein was determined by SDS-PAGE with Coomassie Blue.