

RP10052LQ

Leader in Biomolecular Solutions for Life Science



www.abclonal.com

Recombinant Human NEDD8-conjugating enzyme Ubc12/UBE2M protein

Catalog No.: RP10052LQ **Recombinant**

Sequence Information

| Species | Gene ID | Swiss Prot |
|----------------|---------|------------|
| <I>E. coli</I> | 9040 | P61081 |

Tags

His Tag

Synonyms

UBE2M;UBC-RS2;UBC12;hUbc12

Product Information

| Source | Purification |
|----------------|-----------------------------------|
| <I>E. coli</I> | ≥ 95 % as determined by SDS-PAGE. |

Endotoxin

Please contact us for more information.

Formulation

20 mM Tris, 150 mM NaCl, 2 mM βME, 10% Glycerol

Reconstitution

Background

Ube2M is an E2 enzyme, which is part of the E1, E2, and E3 cascade responsible for conjugation of the Ub-like protein NEDD8 to protein substrates. This E2 is unique from Ube2F in the fact that it does not need to complex with an E3 in order to conjugate the NEDD8 to a Cullin Ring Ligase (CRL), which is a subclass of Ub E3s. The major CRL for Ube2M is cullin-4A.

Basic Information

Description

Bio-Activity

Shipping

The product is shipped at ambient temperature. Upon receipt, store it immediately at the temperature recommended below.

Operational Notes

For your safety and health, please wear a lab coat and disposable gloves for handling.

Storage

Store at -70°C. This product is stable at ≤ -70°C for up to 1 year from the date of receipt. For optimal storage, aliquot into smaller quantities after centrifugation and store at recommended temperature. Avoid repeated freeze-thaw cycles. Avoid repeated freeze/thaw cycles.

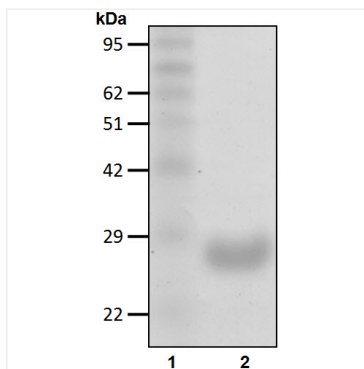
Contact



www.abclonal.com

* For your safety and health, please wear a lab coat and disposable gloves when handling.

Validation Data



Recombinant Human NEDD8-conjugating enzyme Ubc12/UBE2M protein was determined by SDS-PAGE under reducing conditions with Coomassie Blue.