

RP10051LQ

Leader in Biomolecular Solutions for Life Science



www.abclonal.com

# Recombinant Human Ubiquitin/ISG15-conjugating enzyme E2 L6/UBE2L6 protein

Catalog No.: RP10051LQ **Recombinant**

## Sequence Information

Species	Gene ID	Swiss Prot
<I>E. coli</I>	9246	O14933

### Tags

His Tag

### Synonyms

UBE2L6;RIG-B;UBCH8

## Product Information

Source	Purification
<I>E. coli</I>	≥ 95 % as determined by SDS-PAGE.

### Endotoxin

Please contact us for more information.

### Formulation

20 mM Tris, 150 mM NaCl, 2 mM βME, 10% Glycerol

### Reconstitution

## Background

Ube2L6 is an E2 enzyme, which is part of the E1, E2, and E3 cascade responsible for ubiquitination of protein substrates. One function of this E2 is that it is involved in ubiquitination and degradation of a neuron – specific protein called syntaxin 1. Recently Ube2L6 has been shown to work with the Isg15 E1, Ube1L, to conjugate Isg15 to substrates as well.

## Basic Information

### Description

### Bio-Activity

### Shipping

The product is shipped at ambient temperature. Upon receipt, store it immediately at the temperature recommended below.

### Operational Notes

For your safety and health, please wear a lab coat and disposable gloves for handling.

### Storage

Store at -70°C. This product is stable at ≤ -70°C for up to 1 year from the date of receipt. For optimal storage, aliquot into smaller quantities after centrifugation and store at recommended temperature. Avoid repeated freeze-thaw cycles. Avoid repeated freeze/thaw cycles.

## Contact

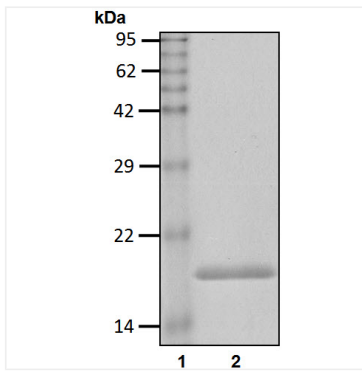


[www.abclonal.com](http://www.abclonal.com)

\* For your safety and health, please wear a lab coat and disposable gloves when handling.

## Validation Data

---



Recombinant Human  
Ubiquitin/ISG15-conjugating enzyme  
E2 L6/UBE2L6 protein was  
determined by SDS-PAGE under  
reducing conditions with Coomassie  
Blue.