

RP10049LQ

Leader in Biomolecular Solutions for Life Science



Recombinant Human Ubiquitin-conjugating enzyme E2 J1/UBE2J1(1-282) protein

Catalog No.: RP10049LQ

Recombinant

Sequence Information

Species	Gene ID	Swiss Prot
E. coli	51465	Q9Y385

Tags

His Tag

Synonyms

UBE2J1; CGI-76; HSPC153; HSPC205; HSU93243; NCUBE-1; NCUBE1; UBC6; UBC6E; Ubc6p

Product Information

Source

E. coli

Purification

~80% by SDS-PAGE

Endotoxin

Formulation

20 mM Tris, 150 mM NaCl, 2 mM β ME, 10% Glycerol

Reconstitution

Background

UbE2J1 is an E2 enzyme, which is part of the E1, E2, and E3 cascade responsible for ubiquitination of protein substrates. UBE2J1 is a membrane protein localized on the endoplasmic reticulum (ER), where it catalyzes ubiquitination of misfolded membrane proteins with other ubiquitination components. UbE2J1(1-282) lacks the C-terminal membrane-localization region, but still possesses Ub conjugating activity.

Basic Information

Description

Bio-Activity

Storage

Store at -70°C . This product is stable at $\leq -70^{\circ}\text{C}$ for up to 1 year from the date of receipt. For optimal storage, aliquot into smaller quantities after centrifugation and store at recommended temperature. Avoid repeated freeze-thaw cycles. Avoid repeated freeze/thaw cycles.

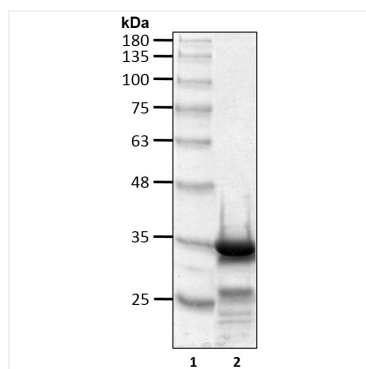
Contact



www.abclonal.com

* For your safety and health, please wear a lab coat and disposable gloves when handling.

Validation Data



Recombinant human Ubiquitin-conjugating enzyme E2 J1/UBE2J1(1-282) protein was determined by SDS-PAGE with Coomassie Blue.