

RP10048LQ

Leader in Biomolecular Solutions for Life Science



Recombinant Human SUMO-conjugating enzyme UBC9/UBE2I protein

Catalog No.: RP10048LQ

Recombinant

Sequence Information

Species	Gene ID	Swiss Prot
<I>E. coli</I>	7329	P63279

Tags

His Tag

Synonyms

C358B7.1; P18; UBC9;UBE2I;P18;UBC9

Product Information

Source	Purification
<I>E. coli</I>	~95% by SDS-PAGE

Endotoxin

Formulation

20 mM Tris, 150 mM NaCl, 2 mM β ME, 10% Glycerol

Reconstitution

Background

Ube2I (Ubc9) is an E2 enzyme in the E1, E2, and E3 cascade to link SUMO to a substrate. This E2 shares a similar sequence and structure to the Ub E2s and is the only known SUMO conjugating enzyme at this time. Ube2I shares 56% amino acid identity with the yeast homolog called Ub – conjugating enzyme 9. While a hypothesis has been proposed that Ube2I may not need an E3 to ligate SUMO.

Basic Information

Description

Bio-Activity

Storage

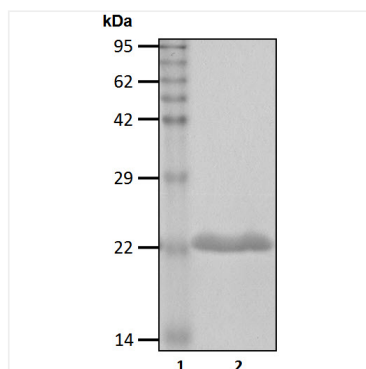
Store at -70°C. This product is stable at $\leq -70^{\circ}\text{C}$ for up to 1 year from the date of receipt. For optimal storage, aliquot into smaller quantities after centrifugation and store at recommended temperature. Avoid repeated freeze-thaw cycles. Avoid repeated freeze/thaw cycles.

Contact



www.abclonal.com

Validation Data



Recombinant human SUMO-conjugating enzyme UBC9/UBE2I protein was determined by SDS-PAGE with Coomassie Blue.