

RP10047LQ

Leader in Biomolecular Solutions for Life Science



Recombinant Human Ubiquitin-conjugating enzyme E2 H/UBE2H protein

Catalog No.: RP10047LQ

Recombinant

Sequence Information

Species	Gene ID	Swiss Prot
<I>E. coli</I>	7328	P62256

Tags

His Tag

Synonyms

UBE2H;E2-20K;GID3;UBC8;UBCH;UBCH
2

Product Information

Source

<I>E. coli</I>

Purification

≥ 95 % as
determined by
SDS-PAGE.

Endotoxin

Please contact us for more
information.

Formulation

20 mM Tris, 150 mM NaCl, 2 mM βME,
10% Glycerol

Reconstitution

Background

Ube2H is an E2 enzyme, which is part of the E1, E2, and E3 cascade responsible for ubiquitination of protein substrates. Ube2H is the human homolog to its yeast counterpart, Ubc8. Ube2H ubiquitinates histone H2A in vitro without the assistance of any E3 ligase. This E2 could also play a role in the development autism disorder because of its location on the 7q32 chromosomal region.

Basic Information

Description

Bio-Activity

Storage

Store at -70°C. This product is stable at ≤ -70°C for up to 1 year from the date of receipt. For optimal storage, aliquot into smaller quantities after centrifugation and store at recommended temperature. Avoid repeated freeze-thaw cycles. Avoid repeated freeze/thaw cycles.

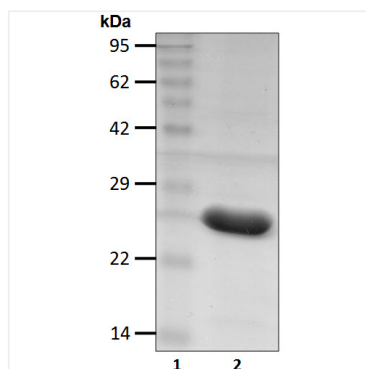
Contact



www.abclonal.com

* For your safety and health, please wear a lab coat and disposable gloves when handling.

Validation Data



Recombinant Human Ubiquitin-conjugating enzyme E2 H/UBE2H protein was determined by SDS-PAGE under reducing conditions with Coomassie Blue.