

RP10046LQ

Leader in Biomolecular Solutions for Life Science



Recombinant Human Ubiquitin-conjugating enzyme E2 G2/UBE2G2 protein

Catalog No.: RP10046LQ **Recombinant**

Sequence Information

Species	Gene ID	Swiss Prot
<I>E. coli</I>	7327	P60604

Tags
His Tag

Synonyms
UBE2G2;UBC7

Product Information

Source	Purification
<I>E. coli</I>	~95% by SDS-PAGE

Endotoxin

Formulation
20 mM Tris, 150 mM NaCl, 2 mM β ME,
10% Glycerol

Reconstitution

Background

Ube2G2 is an E2 enzyme, which is part of the E1, E2, and E3 cascade responsible for ubiquitination of protein substrates. It has been shown to complex with the E3 ligase called GP78 to catalyze K48 – linked Ub chains. This is an endoplasmic reticulum (ER) associated system to help degrade misfolded ER proteins. Ube2G2 likely interacts with Parkin (an E3 ligase that causes autosomal recessive juvenile Parkinsonism) to ubiquitinate and degrade insoluble Pael receptors.

Basic Information

Description

Bio-Activity

Storage

Store at -70°C. This product is stable at $\leq -70^{\circ}\text{C}$ for up to 1 year from the date of receipt. For optimal storage, aliquot into smaller quantities after centrifugation and store at recommended temperature. Avoid repeated freeze-thaw cycles. Avoid repeated freeze/thaw cycles.

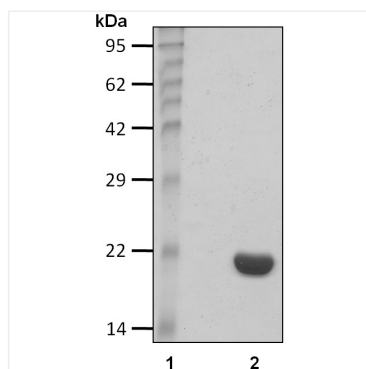
Contact



www.abclonal.com

* For your safety and health, please wear a lab coat and disposable gloves when handling.

Validation Data



Recombinant human Ubiquitin-conjugating enzyme E2 G2/UBE2G2 protein was determined by SDS-PAGE with Coomassie Blue.