

RP10044

Leader in Biomolecular Solutions for Life Science



Recombinant human NEDD8-conjugating enzyme UBE2F protein

Catalog No.: RP10044

Recombinant

Sequence Information

Species	Gene ID	Swiss Prot
Human	140739	

Tags

6xHis tag

Synonyms

Product Information

Source	Purification
E. coli	

Endotoxin

Formulation

Supplied in 20 mM Tris, 150 mM NaCl, 2 mM BME, 10% Glycerol. Contact us for customized product form or formulation.

Reconstitution

Background

Ube2F is an E2 enzyme, which is part of the E1, E2, and E3 cascade responsible for conjugation of Nedd8 to protein substrates. Neddylation is initiated by activating Nedd8 by the Nedd8 activating enzyme APPBP1/UBA3. Cullin is a well-known substrate for Neddylation. When NEDD8 is covalently bonded to the CRL, it stimulates its E3 Ub ligase activity. A new approach to cancer therapy involves hindering the Nedd8 conjugation pathway through inhibition of the NAE1/UBA3 enzyme.

Basic Information

Description

Bio-Activity

Storage

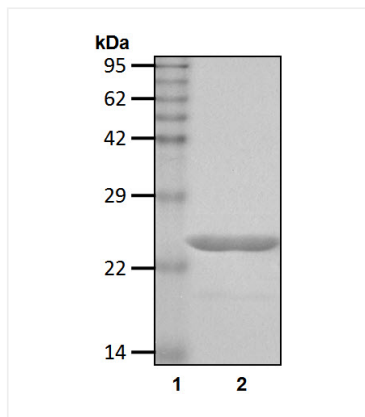
This product is stable at $\leq -70^{\circ}\text{C}$ for up to 6 months from the date of receipt. For optimal storage, aliquot into smaller quantities after centrifugation and store at recommended temperature. Avoid repeated freeze/thaw cycles.

Contact



www.abclonal.com

Validation Data



Recombinant human Ube2F Protein with 6×His tag was determined by SDS-PAGE with Coomassie Blue.