

RP10042LQ

Leader in Biomolecular Solutions for Life Science



# Recombinant Human Ubiquitin-conjugating enzyme E2 E2/UBE2E2 protein

Catalog No.: RP10042LQ **Recombinant**

## Sequence Information

Species	Gene ID	Swiss Prot
E. coli	7325	Q96LR5

### Tags

His Tag

### Synonyms

UBE2E2;UBCH8

## Product Information

Source	Purification
E. coli	~90% by SDS-PAGE

### Endotoxin

### Formulation

20 mM Tris, 150 mM NaCl, 2 mM  $\beta$ ME,  
10% Glycerol

### Reconstitution

## Background

Ube2E2 is an E2 enzyme, which is part of the E1, E2, and E3 cascade responsible for ubiquitination of protein substrates. It shares 96% identical amino acid sequence with Ube2E1 and Ube2E3 with the exception of the N-terminal extension that has little in common with the other two E2s. Ube2E2 interacts with ARA54 and RNF8. The RNF8/ Ube2E2 interaction is found to catalyze K48-linked poly-ubiquitination. Ube2E2 may play a role in ubiquitination and subsequent proteasomal degradation of the E3 Ub ligase Parkin.

## Basic Information

### Description

### Bio-Activity

### Storage

Store at -70°C. This product is stable at  $\leq -70^{\circ}\text{C}$  for up to 1 year from the date of receipt. For optimal storage, aliquot into smaller quantities after centrifugation and store at recommended temperature. Avoid repeated freeze-thaw cycles. Avoid repeated freeze/thaw cycles.

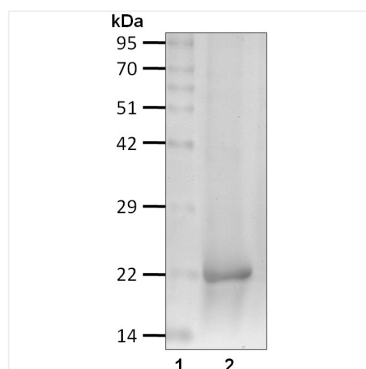
## Contact



[www.abclonal.com](http://www.abclonal.com)

## Validation Data

---



Recombinant human Ubiquitin-conjugating enzyme E2 E2/UBE2E2 protein was determined by SDS-PAGE with Coomassie Blue.