

RP10040LQ

Leader in Biomolecular Solutions for Life Science



# Recombinant Human Ubiquitin-conjugating enzyme E2 D4/UBE2D4 protein

Catalog No.: RP10040LQ **Recombinant**

## Sequence Information

Species	Gene ID	Swiss Prot
E. coli	51619	Q9Y2X8

### Tags

His Tag

### Synonyms

UBE2D4;HBUCE1

## Product Information

Source	Purification
E. coli	~95% by SDS-PAGE

### Endotoxin

### Formulation

20 mM Tris, 150 mM NaCl, 2 mM βME,  
10% Glycerol

### Reconstitution

## Background

Ube2D4 is an E2 enzyme, which is part of the E1, E2, and E3 cascade responsible for ubiquitination of protein substrates. Ube2D4 has been linked to cadmium toxicity. It might also play a role in LDL cholesterol receptor ubiquitination in an Idol-dependent fashion.

## Basic Information

### Description

### Bio-Activity

### Storage

Store at -70°C. This product is stable at ≤ -70°C for up to 1 year from the date of receipt. For optimal storage, aliquot into smaller quantities after centrifugation and store at recommended temperature. Avoid repeated freeze-thaw cycles. Avoid repeated freeze/thaw cycles.

## Contact

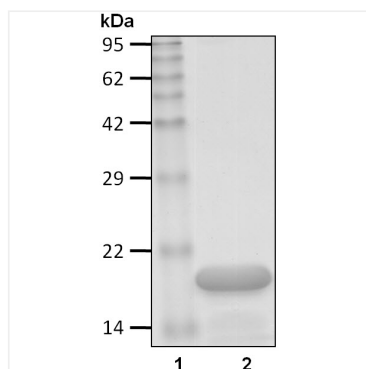


[www.abclonal.com](http://www.abclonal.com)

\* For your safety and health, please wear a lab coat and disposable gloves when handling.

## Validation Data

---



Recombinant human Ubiquitin-conjugating enzyme E2 D4/UBE2D4 protein was determined by SDS-PAGE with Coomassie Blue.