

RP10038LQ

Leader in Biomolecular Solutions for Life Science



Recombinant Human Ubiquitin-conjugating enzyme E2 D2/UBE2D2 protein

Catalog No.: RP10038LQ **Recombinant**

Sequence Information

Species	Gene ID	Swiss Prot
<I>E. coli</I>	7322	P62837

Tags
His Tag

Synonyms
UBE2D2;E2(17)KB2;PUBC1;UBC4;UBC4/5;UBCH4;UBCH5B

Product Information

Source	Purification
<I>E. coli</I>	~95% by SDS-PAGE

Endotoxin

Formulation
20 mM Tris, 150 mM NaCl, 2 mM β ME, 10% Glycerol

Reconstitution

Background

Ube2D2 is an E2 enzyme, which is part of the E1, E2, and E3 cascade responsible for ubiquitination of protein substrates. Ube2D2 is 89% identical to the amino acid sequence of Ube2D1. Ube2D2 works with Mdm2 (an E3 ligase) to ubiquitinate and regulate protein levels of p53 and Mdm2. Ube2D2 has been linked to cadmium toxicity. It might also play a role in LDL cholesterol receptor ubiquitination in an Idol-dependent fashion.

Basic Information

Description

Bio-Activity

Storage

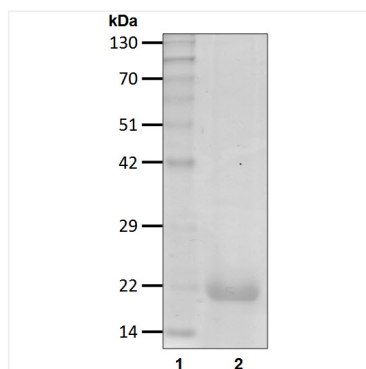
Store at -70°C. This product is stable at $\leq -70^{\circ}\text{C}$ for up to 1 year from the date of receipt. For optimal storage, aliquot into smaller quantities after centrifugation and store at recommended temperature. Avoid repeated freeze-thaw cycles. Avoid repeated freeze/thaw cycles.

Contact



www.abclonal.com

Validation Data



Recombinant human Ubiquitin-conjugating enzyme E2 D2/UBE2D2 protein was determined by SDS-PAGE with Coomassie Blue.