

RP10037LQ

Leader in Biomolecular Solutions for Life Science



www.abclonal.com

Recombinant Human Ubiquitin-conjugating enzyme E2 D1/UBE2D1 protein

Catalog No.: RP10037LQ **Recombinant**

Sequence Information

Species	Gene ID	Swiss Prot
<i>E. coli</i>	7321	P51668

Tags
His Tag

Synonyms

UBE2D1;E2(17)KB1;SFT;UBC4/5;UBCH5;UBCH5A

Product Information

Source	Purification
<i>E. coli</i>	≥ 95 % as determined by SDS-PAGE.

Endotoxin

Please contact us for more information.

Formulation

20 mM Tris, 150 mM NaCl, 2 mM βME, 10% Glycerol

Reconstitution

Background

Ube2D1 is an E2 enzyme, which is part of the E1, E2, and E3 cascade responsible for ubiquitination of protein substrates. Two other homologues of Ube2D1 exist called Ube2D2 and Ube2D3. Ube2D2 is 89% identical to the amino acid sequence of Ube2D1 and Ube2D3 is 88% identical. Ube2D1 has been linked to cadmium toxicity. It might also play a role in LDL cholesterol receptor ubiquitination in an Idol-dependent fashion.

Basic Information

Description

Bio-Activity

Shipping

The product is shipped at ambient temperature. Upon receipt, store it immediately at the temperature recommended below.

Operational Notes

For your safety and health, please wear a lab coat and disposable gloves for handling.

Storage

Store at -70°C. This product is stable at ≤ -70°C for up to 1 year from the date of receipt. For optimal storage, aliquot into smaller quantities after centrifugation and store at recommended temperature. Avoid repeated freeze-thaw cycles. Avoid repeated freeze/thaw cycles.

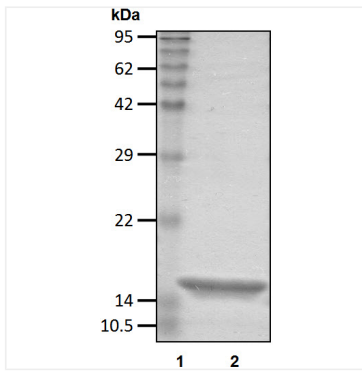
Contact



www.abclonal.com

* For your safety and health, please wear a lab coat and disposable gloves when handling.

Validation Data



Recombinant Human Ubiquitin-conjugating enzyme E2 D1/UBE2D1 protein was determined by SDS-PAGE under reducing conditions with Coomassie Blue.