

RP10036LQ

Leader in Biomolecular Solutions for Life Science



# Recombinant Human UBE2C protein

Catalog No.: RP10036LQ **Recombinant**

## Sequence Information

Species	Gene ID	Swiss Prot
<i>E. coli</i>	11065	O00762

### Tags

His Tag

### Synonyms

UBCH10; dJ447F3.2; UBE2C; UBCH10; ubiquitin-conjugating enzyme E2 C; dJ447F3.2

## Product Information

Source	Purification
<i>E. coli</i>	~95% by SDS-PAGE

### Endotoxin

### Formulation

20 mM Tris, 150 mM NaCl, 2 mM  $\beta$ ME, 10% Glycerol

### Reconstitution

## Background

Ubch10 (Ubc2C) is an E2 enzyme, which is part of the E1, E2, and E3 cascade responsible for ubiquitination of protein substrates. It plays a major role in the mitosis in cell cycle by binding to the anaphase-promoting complex/cyclosome (APC/C), which causes autoubiquitination and degradation of Ubch10. This in turn stabilizes cyclin A, promoting cells enter into S phase. Ubch10 also promotes ubiquitination of many substrates of APC/C.

## Basic Information

### Description

### Bio-Activity

### Storage

Store at  $-70^{\circ}\text{C}$ . This product is stable at  $\leq -70^{\circ}\text{C}$  for up to 1 year from the date of receipt. For optimal storage, aliquot into smaller quantities after centrifugation and store at recommended temperature. Avoid repeated freeze-thaw cycles. Avoid repeated freeze/thaw cycles.

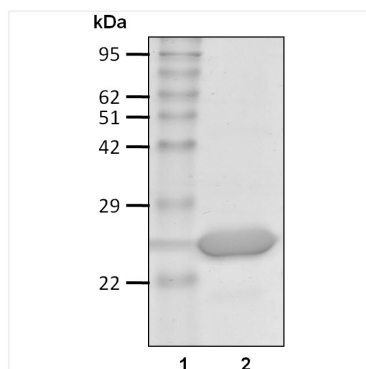
## Contact



[www.abclonal.com](http://www.abclonal.com)

## Validation Data

---



Recombinant human Ubiquitin-conjugating enzyme E2 C/UBE2C protein was determined by SDS-PAGE with Coomassie Blue.