

RP10035LQ

Leader in Biomolecular Solutions for Life Science



Recombinant Human Ubiquitin-conjugating enzyme E2 B/UBE2B protein

Catalog No.: RP10035LQ **Recombinant**

Sequence Information

Species	Gene ID	Swiss Prot
<I>E. coli</I>	7320	P63146

Tags

His Tag

Synonyms

UBE2B; E2-17kDa; HHR6B; HR6B; RAD6B; UBC2; ubiquitin-conjugating enzyme E2 B; E2-17kDa; HHR6B; HR6B; RAD6B; UBC2

Product Information

Source	Purification
<I>E. coli</I>	≥ 95 % as determined by SDS-PAGE.

Endotoxin

Please contact us for more information.

Formulation

20 mM Tris, 150 mM NaCl, 2 mM βME, 10% Glycerol

Reconstitution

Background

Ube2B is an E2 enzyme, which is part of the E1, E2, and E3 cascade responsible for ubiquitination of protein substrates. It shares 95% amino acid sequence identity with Ube2A. One function of Ube2B involves the formation of Ube2B/ Rad18 (an E3 enzyme) complex to monoubiquitinate proliferating cell nuclear antigen (PCNA) thus activating it to repair DNA damage. The Ube2B/Rad18 complex is recruited to the replication fork of the damaged DNA to start the post-replication repair.

Basic Information

Description

Bio-Activity

Storage

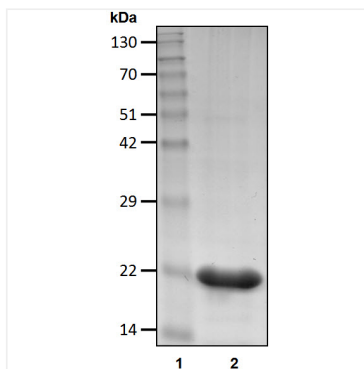
Store at -70°C. This product is stable at ≤ -70°C for up to 1 year from the date of receipt. For optimal storage, aliquot into smaller quantities after centrifugation and store at recommended temperature. Avoid repeated freeze-thaw cycles. Avoid repeated freeze/thaw cycles.

Contact

 www.abclonal.com

* For your safety and health, please wear a lab coat and disposable gloves when handling.

Validation Data



Recombinant Human Ubiquitin-conjugating enzyme E2 B/UBE2B protein was determined by SDS-PAGE under reducing conditions with Coomassie Blue.