

RP10020LQ

Leader in Biomolecular Solutions for Life Science



# Recombinant Human PA28gamma/PSME3 protein

Catalog No.: RP10020LQ

Recombinant

## Sequence Information

Species	Gene ID	Swiss Prot
<I>E. coli</I>	10197	P61289

### Tags

His Tag

### Synonyms

PSME3; HEL-S-283; Ki; PA28-gamma; PA28G; PA28gamma; REG-GAMMA; proteasome activator subunit 3;HEL-S-283;Ki;PA28-gamma;PA28G;PA28gamma;REG-GAMMA

## Product Information

Source	Purification
<I>E. coli</I>	~95% by SDS-PAGE

### Endotoxin

### Formulation

20 mM Tris, 150 mM NaCl, 2 mM  $\beta$ ME, 10% Glycerol

### Reconstitution

## Background

PA28 (also called the 11S regulatory complex) is another activator of the 20S proteasome, which assembles on either one or both ends of the 20S proteasome in an ATP-independent manner. PA28 can greatly enhance the peptidase activities of the 20S proteasome, but not for degradation of ubiquitinated proteins. The PA28 activator is a complex of two alternating homologous subunits, PA28 $\alpha$  and PA28 $\beta$ , which assembles as a hexameric ring with an  $\alpha\beta_3$  stoichiometry. PA28 $\alpha$  and PA28 $\beta$  are induced by interferon. Functionally, PA28 enhances the generation of class I peptides for antigen presentation. The third subunit, PA28 $\gamma$ , was recently identified in the nucleus. Recombinant PA28 $\alpha$  and PA28 $\beta$  form a heptomeric ring; whereas PA28 $\gamma$  forms a hexameric ring. All of them can stimulate the peptidase activities of the 20S proteasome.

## Basic Information

### Description

### Bio-Activity

### Storage

Store at -70°C. This product is stable at  $\leq -70^\circ\text{C}$  for up to 1 year from the date of receipt. For optimal storage, aliquot into smaller quantities after centrifugation and store at recommended temperature. Avoid repeated freeze-thaw cycles. Avoid repeated freeze/thaw cycles.

## Contact

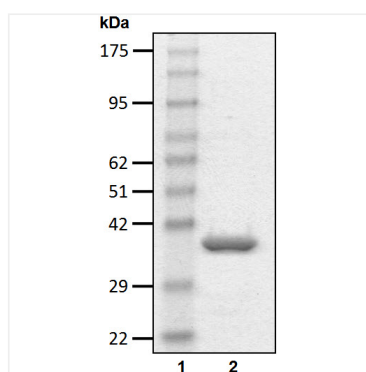


[www.abclonal.com](http://www.abclonal.com)

\* For your safety and health, please wear a lab coat and disposable gloves when handling.

## Validation Data

---



Recombinant human  
PA28gamma/PSME3 protein was  
determined by SDS-PAGE with  
Coomassie Blue.