

RP03538

Leader in Biomolecular Solutions for Life Science



Recombinant Human Dectin-2/CLEC6A Protein

Catalog No.: RP03538 **Recombinant**

Sequence Information

Species	Gene ID	Swiss Prot
HEK293 cells	93978	Q6EIG7

Tags

C-His

Synonyms

CLEC6A; CLECSF10; DECTIN2 , C-type lectin domain family 6 member A

Product Information

Source	Purification
	≥ 90 % as determined by SDS-PAGE.

Endotoxin

< 1 EU/μg of the protein by LAL method.

Formulation

Lyophilized from sterile PBS, 0.1 M Arg, pH 7.4. Please contact us for any concerns or special requirements. Normally 5 % - 8 % trehalose, mannitol and 0.01% Tween80 are added as protectants before lyophilization.

Reconstitution

Centrifuge the vial before opening. Reconstitute to a concentration of 0.1-0.5 mg/mL in sterile distilled water. Avoid vortex or vigorously pipetting the protein. For long term storage, it is recommended to add a carrier protein or stabilizer (e.g. 0.1% BSA, 5% HSA, 10% FBS or 5% Trehalose), and aliquot the reconstituted protein solution to minimize free-thaw cycles.

Contact



www.abclonal.com

Background

CLEC4N, also known as Dectin-2, is a C-type lectin expressed by dendritic cells (DCs) and macrophages. Members of the C-type lectin domain (CTLD) superfamily are metazoan proteins functionally important in glycoprotein metabolism, mechanisms of multicellular integration and immunity. They share a common fold and are involved in a variety of functions, such as generalized defense mechanisms against foreign agents, discrimination between healthy and pathogen-infected cells, and endocytosis and blood coagulation. Genome-level studies on human, elegans and melanogaster demonstrated almost complete divergence among invertebrate and mammalian families of CTLD-containing proteins (CTLDcps).

Basic Information

Description

Recombinant Human Dectin-2/CLEC6A Protein is produced by HEK293 cells expression system. The target protein is expressed with sequence (Thr42-Leu209) of Human Dectin-2/CLEC6A (Accession # NP_001007034) fused with His tag at the C-terminus. .

Bio-Activity

Shipping

The product is shipped at ambient temperature. Upon receipt, store it immediately at the temperature recommended below.

Operational Notes

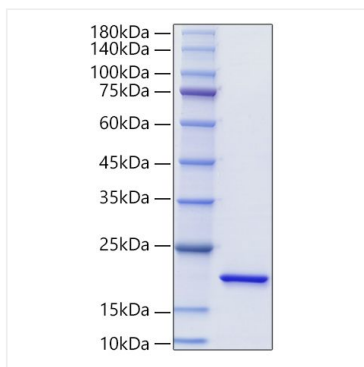
For your safety and health, please wear a lab coat and disposable gloves for handling.

Storage

Store at -20°C. Store the lyophilized protein at -20°C to -80 °C up to 1 year from the date of receipt. After reconstitution, the protein solution is stable at -20°C for 3 months, at 2-8°C for up to 1 week. Avoid repeated freeze/thaw cycles.

* For your safety and health, please wear a lab coat and disposable gloves when handling.

Validation Data



Recombinant Human
Dectin-2/CLEC6A Protein was
determined by SDS-PAGE under
reducing conditions with Coomassie
Blue.