

RP03532

Leader in Biomolecular Solutions for Life Science



# Recombinant Human Nephrin Protein

Catalog No.: RP03532 **Recombinant**

## Sequence Information

Species	Gene ID	Swiss Prot
HEK293 cells	4868	O60500

### Tags

C-His

### Synonyms

NPHS1; NPHN; Nephlin; Renal glomerulus-specific cell adhesion receptor

## Product Information

Source	Purification
	≥ 90 % as determined by SDS-PAGE.

### Endotoxin

< 1 EU/μg of the protein by LAL method.

### Formulation

Lyophilized from sterile PBS, pH 7.4. Normally 5 % - 8 % trehalose, mannitol and 0.01% Tween80 are added as protectants before lyophilization.

### Reconstitution

Centrifuge the vial before opening. Reconstitute to a concentration of 0.1-0.5 mg/mL in sterile distilled water. Avoid vortex or vigorously pipetting the protein. For long term storage, it is recommended to add a carrier protein or stabilizer (e.g. 0.1% BSA, 5% HSA, 10% FBS or 5% Trehalose), and aliquot the reconstituted protein solution to minimize freeze-thaw cycles.

## Background

Seems to play a role in the development or function of the kidney glomerular filtration barrier. Regulates glomerular vascular permeability. May anchor the podocyte slit diaphragm to the actin cytoskeleton. Plays a role in skeletal muscle formation through regulation of myoblast fusion.

## Basic Information

### Description

Recombinant Human Nephlin Protein is produced by HEK293 cells expression system. The target protein is expressed with sequence (Met1-Ser1055) of Human Nephlin (Accession # O60500) fused with His tag at the C-terminus.

### Bio-Activity

### Shipping

The product is shipped at ambient temperature. Upon receipt, store it immediately at the temperature recommended below.

### Operational Notes

For your safety and health, please wear a lab coat and disposable gloves for handling.

### Storage

Store at -20°C. Store the lyophilized protein at -20°C to -80 °C up to 1 year from the date of receipt. After reconstitution, the protein solution is stable at -20°C for 3 months, at 2-8°C for up to 1 week. Avoid repeated freeze/thaw cycles.

## Contact

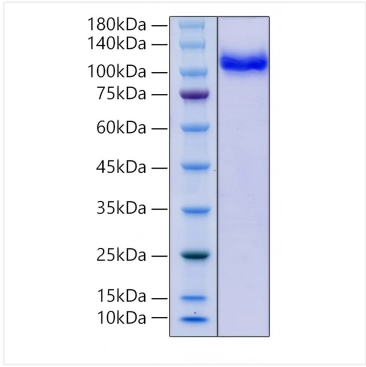


[www.abclonal.com](http://www.abclonal.com)

\* For your safety and health, please wear a lab coat and disposable gloves when handling.

## Validation Data

---



Recombinant Human Nephrin  
Protein was determined by SDS-  
PAGE under reducing conditions with  
Coomassie Blue.