

RP03451LQ

Leader in Biomolecular Solutions for Life Science



Recombinant Human CDC-like kinase 1/CLK1 Kinase

Catalog No.: RP03451LQ **Recombinant**

Sequence Information

Species	Gene ID	Swiss Prot
Baculovirus- Insect Cells	1195	P49759

Tags

N-His-GST

Synonyms

CLK1; CLK; CDC-like kinase 1; Dual specificity protein kinase CLK1

Product Information

Source

Purification

≥ 90 % as determined by SDS-PAGE; ≥ 90 % as determined by HPLC.

Endotoxin

< 1 EU/μg of the protein by LAL method.

Formulation

Supplied as a 0.22 μm filtered solution in 50 mM HEPES, 200 mM NaCl, 20% glycerol, 5 mM DTT, 0.1 M Trehalose. (pH 7.5). Contact us for customized product form or formulation.

Reconstitution

Please use running water to thaw it quickly.

Contact



www.abclonal.com

Background

Dual specificity protein kinase CLK1 is an enzyme that in humans is encoded by the CLK1 gene. This gene encodes a member of the CDC2-like (or LAMMER) family of dual specificity protein kinases. In the cell nucleus, the encoded protein phosphorylates serine/arginine-rich proteins involved in pre-mRNA processing, releasing them into the nucleoplasm. The choice of splice sites during pre-mRNA processing may be regulated by the concentration of transacting factors, including serine/arginine-rich proteins. Therefore, the encoded protein may play an indirect role in governing splice site selection.

Basic Information

Description

Recombinant Human CDC-like kinase 1/CLK1 Kinase is produced by Baculovirus-Insect Cells expression system. The target protein is expressed with sequence (His129-Ile484) of Human CLK1 (Accession #P49759) fused with a N-His-GST tag.

Bio-Activity

The activity of CLK1 is based on the MSA technology, and the content and ratio of the substrate and the product are directly separated and detected in real time and dynamically by the different migration rates of the substrate and the product after the enzymatic reaction.

Shipping

The product is shipped at ambient temperature. Upon receipt, store it immediately at the temperature recommended below.

Operational Notes

For your safety and health, please wear a lab coat and disposable gloves for handling.

Storage

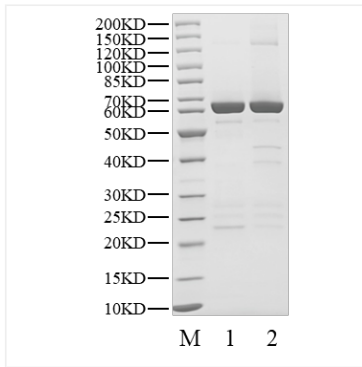
Store at -70°C. This product is stable at ≤ -70°C for up to 1 year from the date of receipt. For optimal storage, aliquot into smaller quantities after centrifugation and store at recommended temperature.

Aliquots below 10 μL are not advisable. Product must not be stored in diluted solutions. Avoid repeated freeze-thaw cycles.

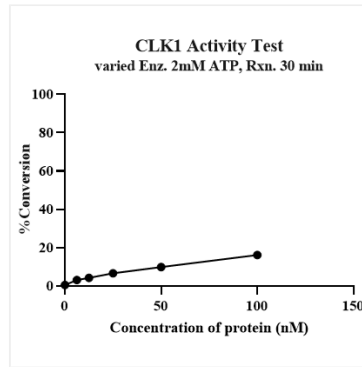
Avoid repeated freeze/thaw cycles.

* For your safety and health, please wear a lab coat and disposable gloves when handling.

Validation Data



Recombinant Human CDC-like kinase 1/CLK1 Kinase was resolved with SDS-PAGE under reducing (Lane 1) and non-reducing (Lane 2) conditions.



The activity of CLK1 is based on the MSA technology, and the content and ratio of the substrate and the product are directly separated and detected in real time and dynamically by the different migration rates of the substrate and the product after the enzymatic reaction.