

RP03442LQ

Leader in Biomolecular Solutions for Life Science



Recombinant Human CK1-gamma 1/CSNK1G1 Kinase

Catalog No.: RP03442LQ **Recombinant**

Sequence Information

Species	Gene ID	Swiss Prot
Baculovirus- Insect Cells	53944	Q9HCP0

Tags

N-GST

Synonyms

CSNK1G1; CKI-gamma 1; CK1γ1;
Casein kinase I isoform gamma-1

Product Information

Source	Purification
	≥ 90 % as determined by SDS-PAGE; ≥ 90 % as determined by HPLC.

Endotoxin

< 1 EU/μg of the protein by LAL
method.

Formulation

Supplied as a 0.22 μm filtered solution
in 50 mM Tris-HCl, 200 mM NaCl,
20% glycerol, 1 mM DTT. (pH 7.5).
Contact us for customized product
form or formulation.

Reconstitution

Please use running water to thaw it
quickly.

Contact



www.abclonal.com

Background

Casein kinase I isoform gamma-1 is a member of the CK1 (formerly named casein kinase 1) family of serine/threonine specific eukaryotic protein kinases encompassing seven distinct isoforms (CK1α, γ1-3, δ, ε) as well as various post-transcriptionally processed splice variants (transcription variants, TVs) in mammals. Like eukaryotic protein kinases (ePKs) the different isoforms of the CK1 family consist of a N-terminal and a C-terminal lobe (N- and C-lobe, respectively), which are connected via a hinge region. The gamma-1 isoform is involved in growth and morphogenesis of eukaryotic cells.

Basic Information

Description

Recombinant Human CK1-gamma 1/CSNK1G1 Kinase is produced by Baculovirus-Insect Cells expression system. The target protein is expressed with sequence (Asp2-Lys422) of Human CSNK1G1 (Accession #Q9HCP0) fused with a N-GST tag.

Bio-Activity

The activity of CSNK1G1 is based on the MSA technology, and the content and ratio of the substrate and the product are directly separated and detected in real time and dynamically by the different migration rates of the substrate and the product after the enzymatic reaction.

Shipping

The product is shipped at ambient temperature. Upon receipt, store it immediately at the temperature recommended below.

Operational Notes

For your safety and health, please wear a lab coat and disposable gloves for handling.

Storage

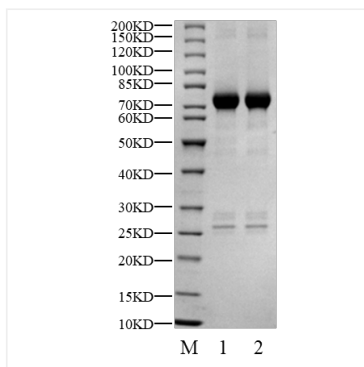
Store at -70°C. This product is stable at ≤ -70°C for up to 1 year from the date of receipt. For optimal storage, aliquot into smaller quantities after centrifugation and store at recommended temperature.

Aliquots below 10 μL are not advisable. Product must not be stored in diluted solutions. Avoid repeated freeze-thaw cycles.

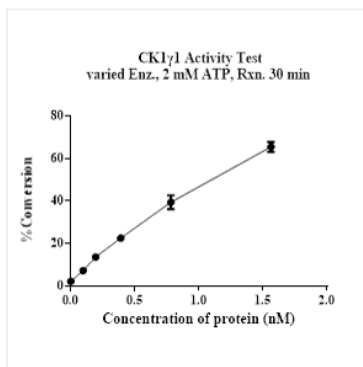
Avoid repeated freeze/thaw cycles.

* For your safety and health, please wear a lab coat and disposable gloves when handling.

Validation Data



Recombinant Human CK1-gamma 1/CSNK1G1 Kinase was resolved with SDS-PAGE under reducing (Lane 1) and non-reducing (Lane 2) conditions.



The activity of CSNK1G1 is based on the MSA technology, and the content and ratio of the substrate and the product are directly separated and detected in real time and dynamically by the different migration rates of the substrate and the product after the enzymatic reaction.