

RP03437LQ

Leader in Biomolecular Solutions for Life Science



www.abclonal.com

Recombinant Human SRPK1 Kinase

Catalog No.: RP03437LQ **Recombinant**

Sequence Information

Species	Gene ID	Swiss Prot
E. coli	6732	Q96SB4

Tags

No tag

Synonyms

SRPK1; SRSF protein kinase 1;
Serine/arginine-rich protein-specific
kinase 1

Product Information

Source

Purification

≥ 80 % as
determined by
SDS-PAGE; ≥ 80 %
as determined by
HPLC.

Endotoxin

< 1 EU/μg of the protein by LAL
method.

Formulation

Supplied as a 0.22 μm filtered solution
in 50 mM Tris-HCl, 200 mM NaCl, 1
mM DTT, 20% glycerol. (pH 7.5).
Contact us for customized product
form or formulation.

Reconstitution

Please use running water to thaw it
quickly.

Contact



www.abclonal.com

Background

Serine/arginine-Rich Splicing Factor (SRSF) protein kinase-1 SRPK1 is an enzyme that in humans is encoded by the SRPK1 gene. This gene encodes a serine/arginine protein kinase specific for the SR (serine/arginine-rich domain) family of splicing factors. The protein localizes to the nucleus and the cytoplasm. It is thought to play a role in regulation of both constitutive and alternative splicing by regulating intracellular localization of splicing factors. A second alternatively spliced transcript variant for this gene has been described, but its full length nature has not been determined. SRPK1 enables angiogenesis, which is regulated by VEGF, which either initiates or inhibits vessel formation depending on alternative splicing.

Basic Information

Description

Recombinant Human SRPK1 Kinase is produced by E. coli expression system. The target protein is expressed with sequence (Met1-Ser655) of Human SRPK1 (Accession #Q96SB4) fused with No tag.

Bio-Activity

The activity of SRPK1 is based on the MSA technology, and the content and ratio of the substrate and the product are directly separated and detected in real time and dynamically by the different migration rates of the substrate and the product after the enzymatic reaction.

Shipping

The product is shipped at ambient temperature. Upon receipt, store it immediately at the temperature recommended below.

Operational Notes

For your safety and health, please wear a lab coat and disposable gloves for handling.

Storage

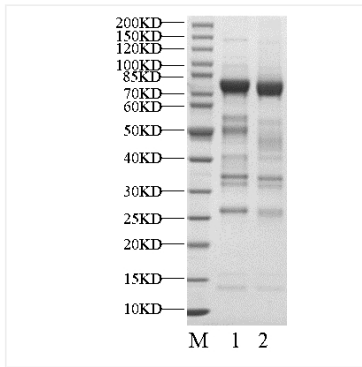
Store at -70°C. This product is stable at ≤ -70°C for up to 1 year from the date of receipt. For optimal storage, aliquot into smaller quantities after centrifugation and store at recommended temperature.

Aliquots below 10 μL are not advisable. Product must not be stored in diluted solutions. Avoid repeated freeze-thaw cycles.

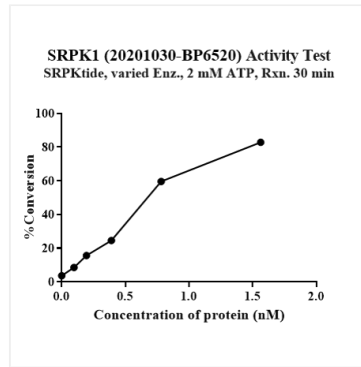
Avoid repeated freeze/thaw cycles.

* For your safety and health, please wear a lab coat and disposable gloves when handling.

Validation Data



Recombinant Human SRPK1 Kinase was resolved with SDS-PAGE under reducing (Lane 1) and non-reducing (Lane 2) conditions.



The activity of SRPK1 is based on the MSA technology, and the content and ratio of the substrate and the product are directly separated and detected in real time and dynamically by the different migration rates of the substrate and the product after the enzymatic reaction.