

RP03402LQ

Leader in Biomolecular Solutions for Life Science



Recombinant Human CK1-alpha/CSNK1A1 Kinase

Catalog No.: RP03402LQ **Recombinant**

Sequence Information

Species	Gene ID	Swiss Prot
Baculovirus- Insect Cells	1452	P48729

Tags

N-His-GST&C-Strep II

Synonyms

CSNK1A1; CK1 α ; CK1; CKI-alpha; CK1 alpha; Casein kinase I isoform alpha

Product Information

Source	Purification
	$\geq 85\%$ as determined by SDS-PAGE; $\geq 85\%$ as determined by HPLC.

Endotoxin

< 1 EU/ μ g of the protein by LAL method.

Formulation

Supplied as a 0.22 μ m filtered solution in 50 mM Tris-HCl, 200 mM NaCl, 20% glycerol, 5 mM DTT, 0.1 M Trehalose. (pH 7.5). Contact us for customized product form or formulation.

Reconstitution

Please use running water to thaw it quickly.

Contact



www.abclonal.com

Background

Casein kinase I isoform alpha is an enzyme that in humans is encoded by the CSNK1A1 gene. The Casein kinase 1 family of protein kinases are serine/threonine-selective enzymes that function as regulators of signal transduction pathways in most eukaryotic cell types. CK1 isoforms are involved in Wnt signaling, circadian rhythms, nucleo-cytoplasmic shuttling of transcription factors, DNA repair, and DNA transcription. Casein kinase 1, alpha 1 has been shown to interact with Centaurin, alpha 1 and AXIN1.

Basic Information

Description

Recombinant Human CK1-alpha/CSNK1A1 Kinase is produced by Baculovirus-Insect Cells expression system. The target protein is expressed with sequence (Ala2-Phe337) of Human CSNK1A1 (Accession #P48729) fused with a N-His-GST&C-Strep II tag.

Bio-Activity

The activity of CSNK1A1 is based on the MSA technology, and the content and ratio of the substrate and the product are directly separated and detected in real time and dynamically by the different migration rates of the substrate and the product after the enzymatic reaction.

Shipping

The product is shipped at ambient temperature. Upon receipt, store it immediately at the temperature recommended below.

Operational Notes

For your safety and health, please wear a lab coat and disposable gloves for handling.

Storage

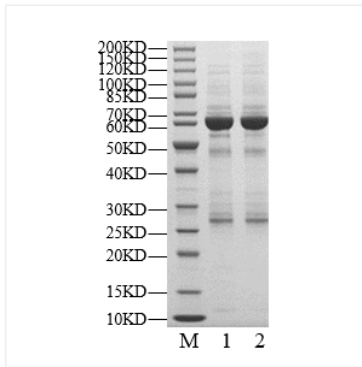
Store at -70°C . This product is stable at $\leq -70^{\circ}\text{C}$ for up to 1 year from the date of receipt. For optimal storage, aliquot into smaller quantities after centrifugation and store at recommended temperature.

Aliquots below 10 μ L are not advisable. Product must not be stored in diluted solutions. Avoid repeated freeze-thaw cycles.

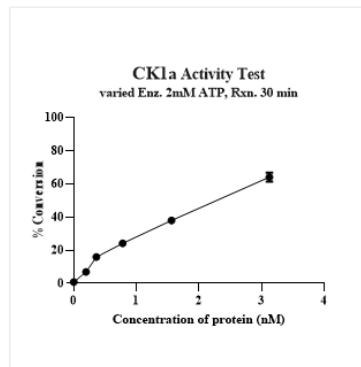
Avoid repeated freeze/thaw cycles.

* For your safety and health, please wear a lab coat and disposable gloves when handling.

Validation Data



Recombinant Human CK1-alpha/CSNK1A1 Kinase was resolved with SDS-PAGE under reducing (Lane 1) and non-reducing (Lane 2) conditions.



The activity of CSNK1A1 is based on the MSA technology, and the content and ratio of the substrate and the product are directly separated and detected in real time and dynamically by the different migration rates of the substrate and the product after the enzymatic reaction.