

RP03398LQ

Leader in Biomolecular Solutions for Life Science



# Recombinant Human MAP3K8/COT Kinase

Catalog No.: RP03398LQ **Recombinant**

## Sequence Information

Species	Gene ID	Swiss Prot
Baculovirus- Insect Cells	1326	P41279

### Tags

N-His-GST

### Synonyms

MAP3K8; COT; ESTF; TPL-2; Cancer Osaka thyroid oncogene; c-Cot; Tumor progression locus 2; Mitogen-activated protein kinase kinase kinase 8

## Product Information

Source	Purification
	≥ 85% as determined by SDS-PAGE; ≥ 85% as determined by HPLC.

### Endotoxin

< 1 EU/μg of the protein by LAL method.

### Formulation

Supplied as a 0.22 μm filtered solution in 50 mM Tris-HCl, 200 mM NaCl, 5% glycerol, 1 mM DTT. (pH 7.5). Contact us for customized product form or formulation.

### Reconstitution

Please use running water to thaw it quickly.

## Contact



[www.abclonal.com](http://www.abclonal.com)

## Background

Mitogen-activated protein kinase kinase kinase 8 is an enzyme that in humans is encoded by the MAP3K8 gene. MAP3K8 is a member of the serine/threonine-specific protein kinase family. This kinase can activate ERK1, ERK2 and p38 MAP kinases, and was shown to activate IκappaB kinases, and thus induce the nuclear production of NF-kappaB. This kinase was also found to promote the production of TNF-alpha and IL-2 during T lymphocyte activation. Studies of a similar gene in rat suggested the direct involvement of this kinase in the proteolysis of NF-kappaB1, p105 (NFKB1).

## Basic Information

### Description

Recombinant Human MAP3K8/COT Kinase is produced by Baculovirus-Insect Cells expression system. The target protein is expressed with sequence (Met30-Arg397) of Human MAP3K8 (Accession #P41279) fused with a N-His-GST tag.

### Bio-Activity

The activity of COT is based on the MSA technology, and the content and ratio of the substrate and the product are directly separated and detected in real time and dynamically by the different migration rates of the substrate and the product after the enzymatic reaction.

### Shipping

The product is shipped at ambient temperature. Upon receipt, store it immediately at the temperature recommended below.

### Operational Notes

For your safety and health, please wear a lab coat and disposable gloves for handling.

### Storage

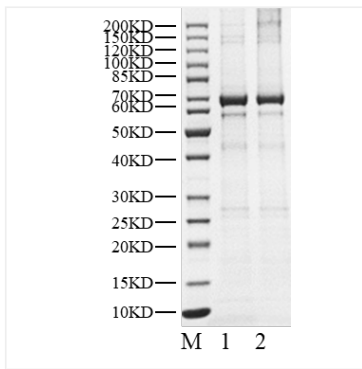
Store at -70°C. This product is stable at ≤ -70°C for up to 1 year from the date of receipt. For optimal storage, aliquot into smaller quantities after centrifugation and store at recommended temperature.

Aliquots below 10 μL are not advisable. Product must not be stored in diluted solutions. Avoid repeated freeze-thaw cycles.

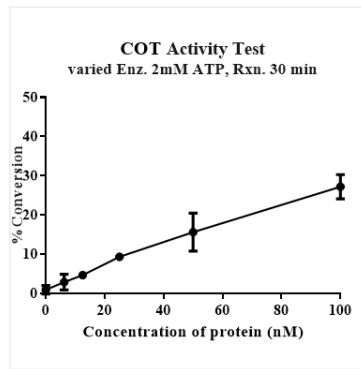
Avoid repeated freeze/thaw cycles.

\* For your safety and health, please wear a lab coat and disposable gloves when handling.

## Validation Data



Recombinant Human MAP3K8/COT Kinase was resolved with SDS-PAGE under reducing (Lane 1) and non-reducing (Lane 2) conditions.



The activity of COT is based on the MSA technology, and the content and ratio of the substrate and the product are directly separated and detected in real time and dynamically by the different migration rates of the substrate and the product after the enzymatic reaction.