

RP03383LQ

Leader in Biomolecular Solutions for Life Science



Recombinant Human PIM1 Kinase

Catalog No.: RP03383LQ **Recombinant**

Sequence Information

Species	Gene ID	Swiss Prot
E. coli	5292	P11309

Tags

No tag

Synonyms

PIM1; PIM; Serine/threonine-protein kinase pim-1

Product Information

Source

Purification

≥ 90 % as determined by SDS-PAGE; ≥ 90 % as determined by HPLC.

Endotoxin

< 1 EU/μg of the protein by LAL method.

Formulation

Supplied as a 0.22 μm filtered solution in 50 mM HEPES, 150 mM NaCl, 5% glycerol. (pH 7.5). Contact us for customized product form or formulation.

Reconstitution

Please use running water to thaw it quickly.

Contact



www.abclonal.com

Background

Pim-1 is a proto-oncogene which encodes for the serine/threonine kinase of the same name. The pim-1 oncogene was first described in relation to murine T-cell lymphomas, as it was the locus most frequently activated by the Moloney murine leukemia virus. Subsequently, the oncogene has been implicated in multiple human cancers, including prostate cancer, acute myeloid leukemia and other hematopoietic malignancies. Primarily expressed in spleen, thymus, bone marrow, prostate, oral epithelial, hippocampus and fetal liver cells, Pim-1 has also been found to be highly expressed in cell cultures isolated from human tumors. Pim-1 is mainly involved in cell cycle progression, apoptosis and transcriptional activation, as well as more general signal transduction pathways. Pim-1's role in oncogenic signalling has led to it becoming a widely studied target in cancer research, with numerous drug candidates under investigation which target it.

Basic Information

Description

Recombinant Human PIM1 Kinase is produced by E. coli expression system. The target protein is expressed with sequence (Ala14-Lys313) of Human PIM1 (Accession #P11309) fused with No tag.

Bio-Activity

The activity of PIM1 is based on the MSA technology, and the content and ratio of the substrate and the product are directly separated and detected in real time and dynamically by the different migration rates of the substrate and the product after the enzymatic reaction.

Shipping

The product is shipped at ambient temperature. Upon receipt, store it immediately at the temperature recommended below.

Operational Notes

For your safety and health, please wear a lab coat and disposable gloves for handling.

Storage

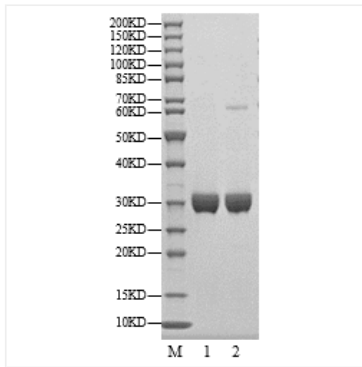
Store at -70°C. This product is stable at ≤ -70°C for up to 1 year from the date of receipt. For optimal storage, aliquot into smaller quantities after centrifugation and store at recommended temperature.

Aliquots below 10 μL are not advisable. Product must not be stored in diluted solutions. Avoid repeated freeze-thaw cycles.

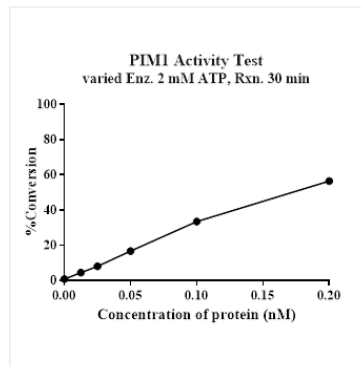
Avoid repeated freeze/thaw cycles.

* For your safety and health, please wear a lab coat and disposable gloves when handling.

Validation Data



Recombinant Human PIM1 Kinase was resolved with SDS-PAGE under reducing (Lane 1) and non-reducing (Lane 2) conditions.



The activity of PIM1 is based on the MSA technology, and the content and ratio of the substrate and the product are directly separated and detected in real time and dynamically by the different migration rates of the substrate and the product after the enzymatic reaction.