

RP03352LQ

Leader in Biomolecular Solutions for Life Science



# Recombinant Human RET (S891A) Kinase

Catalog No.: RP03352LQ **Recombinant**

## Sequence Information

Species	Gene ID	Swiss Prot
Baculovirus- Insect Cells	5979	P07949

### Tags

N-His-GST

### Synonyms

RET; CDHF12; CDHR16; PTC; Proto-oncogene c-Ret; Cadherin family member 12; Proto-oncogene tyrosine-protein kinase receptor Ret

## Product Information

Source	Purification
	≥ 90 % as determined by SDS-PAGE; ≥ 90 % as determined by HPLC.

### Endotoxin

< 1 EU/μg of the protein by LAL method.

### Formulation

Supplied as a 0.22 μm filtered solution in 50 mM Tris-HCl, 200 mM NaCl, 5% glycerol, 1 mM DTT. (pH 7.5). Contact us for customized product form or formulation.

### Reconstitution

Please use running water to thaw it quickly.

## Contact



[www.abclonal.com](http://www.abclonal.com)

## Background

The RET proto-oncogene encodes a receptor tyrosine kinase for members of the glial cell line-derived neurotrophic factor (GDNF) family of extracellular signalling molecules. In order to activate RET, GDNF-family ligands (GFLs) first need to form a complex with a glycosylphosphatidylinositol (GPI)-anchored co-receptor. The co-receptors themselves are classified as members of the GDNF receptor-α (GFRα) protein family. Different members of the GFRα family (GFRα1, GFRα2, GFRα3, GFRα4) exhibit a specific binding activity for a specific GFLs. Mice deficient in GDNF, GFRα1 or the RET protein itself exhibit severe defects in kidney and enteric nervous system development. This implicates RET signal transduction as key to the development of normal kidneys and the enteric nervous system.

## Basic Information

### Description

Recombinant Human RET (S891A) Protein is produced by Baculovirus-Insect Cells expression system. The target protein is expressed with sequence (His658-Ser1114 (S891A)) of Human RET (Accession #P07949) fused with a N-His-GST tag.

### Bio-Activity

The activity of RET is based on the MSA technology, and the content and ratio of the substrate and the product are directly separated and detected in real time and dynamically by the different migration rates of the substrate and the product after the enzymatic reaction.

### Shipping

The product is shipped at ambient temperature. Upon receipt, store it immediately at the temperature recommended below.

### Operational Notes

For your safety and health, please wear a lab coat and disposable gloves for handling.

### Storage

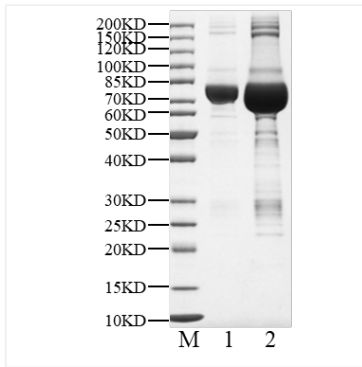
Store at -70°C. This product is stable at ≤ -70°C for up to 1 year from the date of receipt. For optimal storage, aliquot into smaller quantities after centrifugation and store at recommended temperature.

Aliquots below 10 μL are not advisable. Product must not be stored in diluted solutions. Avoid repeated freeze-thaw cycles.

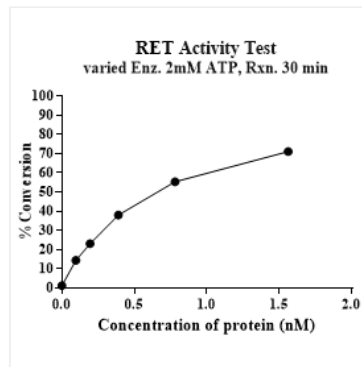
Avoid repeated freeze/thaw cycles.

\* For your safety and health, please wear a lab coat and disposable gloves when handling.

## Validation Data



Recombinant Human RET (S891A) Kinase was determined by SDS-PAGE under reducing (R) and non-reducing (NR) conditions.



The activity of RET is based on the MSA technology, and the content and ratio of the substrate and the product are directly separated and detected in real time and dynamically by the different migration rates of the substrate and the product after the enzymatic reaction.