

RP03349LQ

Leader in Biomolecular Solutions for Life Science



Recombinant Human PKC epsilon/PRKCE Kinase

Catalog No.: RP03349LQ **Recombinant**

Sequence Information

Species	Gene ID	Swiss Prot
Baculovirus- Insect Cells	5581	Q02156

Tags

N-GST

Synonyms

PRKCE; PRKCE; nPKC-epsilon; Protein kinase C epsilon type

Product Information

Source	Purification
	≥ 90 % as determined by SDS-PAGE; ≥ 90 % as determined by HPLC.

Endotoxin

< 1 EU/μg of the protein by LAL method.

Formulation

Supplied as a 0.22 μm filtered solution in 50 mM Tris-HCl, 150 mM NaCl, 5% glycerol, 5 mM DTT, 0.1 M Trehalose. (pH 7.5). Contact us for customized product form or formulation.

Reconstitution

Please use running water to thaw it quickly.

Contact



www.abclonal.com

Background

Protein kinase C epsilon type (PKCε) is an enzyme that in humans is encoded by the PRKCE gene. PKCε is an isoform of the large PKC family of protein kinases that play many roles in different tissues. In cardiac muscle cells, PKCε regulates muscle contraction through its actions at sarcomeric proteins, and PKCε modulates cardiac cell metabolism through its actions at mitochondria. PKCε is clinically significant in that it is a central player in cardioprotection against ischemic injury and in the development of cardiac hypertrophy.

Basic Information

Description

Recombinant Human PKC epsilon/PRKCE Protein is produced by Baculovirus-Insect Cells expression system. The target protein is expressed with sequence (Val2-Pro737) of Human PRKCE (Accession #Q02156) fused with a N-GST tag.

Bio-Activity

The activity of PRKCE is based on the MSA technology, and the content and ratio of the substrate and the product are directly separated and detected in real time and dynamically by the different migration rates of the substrate and the product after the enzymatic reaction.

Shipping

The product is shipped at ambient temperature. Upon receipt, store it immediately at the temperature recommended below.

Operational Notes

For your safety and health, please wear a lab coat and disposable gloves for handling.

Storage

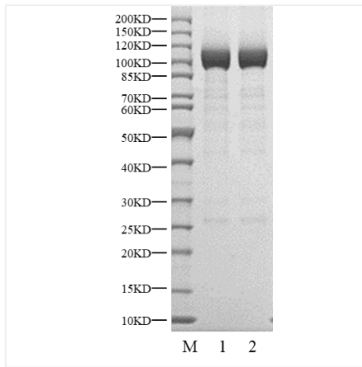
Store at -70°C. This product is stable at ≤ -70°C for up to 1 year from the date of receipt. For optimal storage, aliquot into smaller quantities after centrifugation and store at recommended temperature.

Aliquots below 10 μL are not advisable. Product must not be stored in diluted solutions. Avoid repeated freeze-thaw cycles.

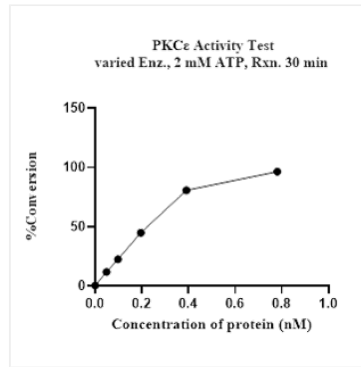
Avoid repeated freeze/thaw cycles.

* For your safety and health, please wear a lab coat and disposable gloves when handling.

Validation Data



Recombinant Human PKC epsilon/PRKCE Kinase was determined by SDS-PAGE under reducing (R) and non-reducing (NR) conditions.



The activity of PRKCE is based on the MSA technology, and the content and ratio of the substrate and the product are directly separated and detected in real time and dynamically by the different migration rates of the substrate and the product after the enzymatic reaction.