

RP03324LQ

Leader in Biomolecular Solutions for Life Science



Recombinant Human CK1-gamma 2/CSNK1G2 Kinase

Catalog No.: RP03324LQ **Recombinant**

Sequence Information

Species	Gene ID	Swiss Prot
Baculovirus- Insect Cells	1455	P78368

Tags

N-His

Synonyms

CSNK1G2; CK1g; CK1G2; CKI-gamma 2;
Casein kinase I isoform gamma-2

Product Information

Source	Purification
	≥ 85% as determined by SDS-PAGE; ≥ 85% as determined by HPLC.

Endotoxin

< 1 EU/μg of the protein by LAL
method.

Formulation

Supplied as a 0.22 μm filtered solution
in 50 mM Tris-HCl, 200 mM NaCl, 20%
glycerol, 1 mM DTT. (pH 7.5). Contact
us for customized product form or
formulation.

Reconstitution

Please use running water to thaw it
quickly.

Contact



www.abclonal.com

Background

Casein kinase I isoform gamma-2 (CK1g) encoded by the CSNK1G2 gene is a member of the large casein kinase I (CKI) family, which belongs to the intracellular serine/threonine kinases. The CKI family includes several other isoforms (alpha, beta, gamma, and delta). Casein kinase 1 gamma (CK1gamma) is associated with the cell membrane and binds to LRP. CK1gamma was found to be needed for Wnt signaling through LRP. CSNK1G2 inhibits Smad3-mediated TGF-beta responses including induction of target genes and cell growth arrest, and this inhibition is dependent on CSNK1G2 kinase activity. The overexpression of CSNK1G2 in human cancers, may act as an oncoprotein during tumorigenesis.

Basic Information

Description

Recombinant Human CK1-gamma 2/CSNK1G2 Protein is produced by Baculovirus-Insect Cells expression system. The target protein is expressed with sequence (Lys5-Asp353) of Human CSNK1G2 (Accession #P78368) fused with a N-His tag.

Bio-Activity

The activity of CK1g is based on the MSA technology, and the content and ratio of the substrate and the product are directly separated and detected in real time and dynamically by the different migration rates of the substrate and the product after the enzymatic reaction.

Shipping

The product is shipped at ambient temperature. Upon receipt, store it immediately at the temperature recommended below.

Operational Notes

For your safety and health, please wear a lab coat and disposable gloves for handling.

Storage

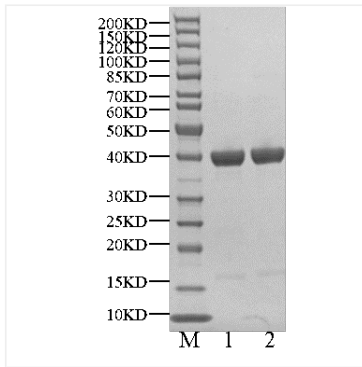
Store at -70°C. This product is stable at ≤ -70°C for up to 1 year from the date of receipt. For optimal storage, aliquot into smaller quantities after centrifugation and store at recommended temperature.

Aliquots below 10 μL are not advisable. Product must not be stored in diluted solutions. Avoid repeated freeze-thaw cycles.

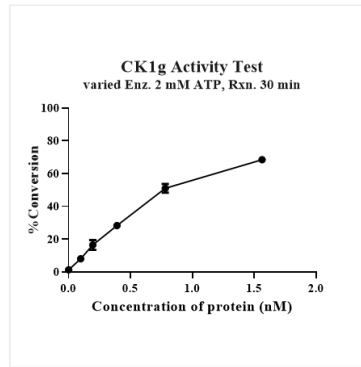
Avoid repeated freeze/thaw cycles.

* For your safety and health, please wear a lab coat and disposable gloves when handling.

Validation Data



Recombinant Human CK1-gamma 2/CSNK1G2 Kinase was determined by SDS-PAGE under reducing (R) and non-reducing (NR) conditions.



The activity of CK1g is based on the MSA technology, and the content and ratio of the substrate and the product are directly separated and detected in real time and dynamically by the different migration rates of the substrate and the product after the enzymatic reaction.