

RP03322LQ

Leader in Biomolecular Solutions for Life Science



www.abclonal.com

# Recombinant Human BMX/NTK38/ETK Kinase

Catalog No.: RP03322LQ **Recombinant**

## Sequence Information

Species	Gene ID	Swiss Prot
Baculovirus- Insect Cells	660	P51813

### Tags

No tag

### Synonyms

BMX; NTK38; ETK; cytoplasmic tyrosine-protein kinase BMX

## Product Information

### Source

#### Purification

≥ 90 % as determined by SDS-PAGE; ≥ 90 % as determined by HPLC.

### Endotoxin

< 1 EU/μg of the protein by LAL method.

### Formulation

Supplied as a 0.22 μm filtered solution in 20 mM Tris-HCl, 250 mM NaCl, 5 mM DTT. (pH 8.0). Contact us for customized product form or formulation.

### Reconstitution

Please use running water to thaw it quickly.

## Contact



[www.abclonal.com](http://www.abclonal.com)

## Background

Bone marrow kinase on chromosome X (BMX) is a member of the tyrosine kinase expressed in hepatocellular carcinoma (TEC) family of nonreceptor tyrosine kinases, and within this family, it is most closely related to Bruton's tyrosine kinase (BTK). BMX shares with other TEC family kinases a conserved domain architecture including an N-terminal pleckstrin homology (PH) domain, which has been described to bind phosphatidylinositol(3,4,5)-tris-phosphate and thereby leads to membrane association of BMX. BMX has been suggested to have a role in differentiation, motility, and cell survival. Although BMX-deficient mice do not show spontaneous phenotypes, BMX has been shown to play a crucial role in ischemia-induced arteriogenesis and angiogenesis, as well as VEGF-induced lymphangiogenesis.

## Basic Information

### Description

Recombinant Human BMX/NTK38/ETK Protein is produced by Baculovirus-Insect Cells expression system. The target protein is expressed with sequence (Glu411-His675) of Human BMX (Accession #P51813) fused with No tag.

### Bio-Activity

The activity of BMX is based on the MSA technology, and the content and ratio of the substrate and the product are directly separated and detected in real time and dynamically by the different migration rates of the substrate and the product after the enzymatic reaction.

### Shipping

The product is shipped at ambient temperature. Upon receipt, store it immediately at the temperature recommended below.

### Operational Notes

For your safety and health, please wear a lab coat and disposable gloves for handling.

### Storage

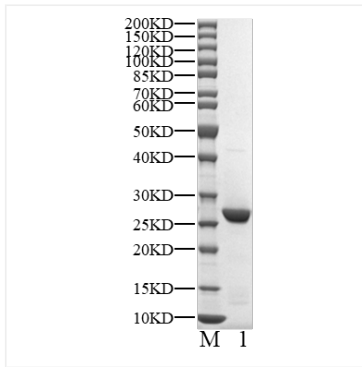
Store at -70°C. This product is stable at ≤ -70°C for up to 1 year from the date of receipt. For optimal storage, aliquot into smaller quantities after centrifugation and store at recommended temperature.

Aliquots below 10 μL are not advisable. Product must not be stored in diluted solutions. Avoid repeated freeze-thaw cycles.

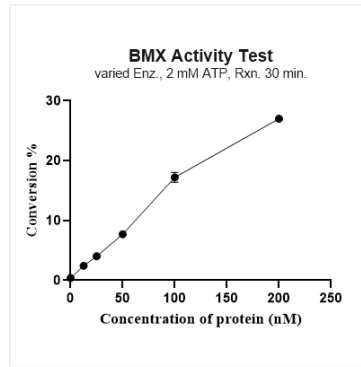
Avoid repeated freeze/thaw cycles.

\* For your safety and health, please wear a lab coat and disposable gloves when handling.

## Validation Data



Recombinant Human BMX/NTK38/ETK Kinase was determined by SDS-PAGE under reducing conditions with Coomassie Blue.



The activity of BMX is based on the MSA technology, and the content and ratio of the substrate and the product are directly separated and detected in real time and dynamically by the different migration rates of the substrate and the product after the enzymatic reaction.