

RP03306LQ

Leader in Biomolecular Solutions for Life Science



# Recombinant Human CDK16&Cyclin Y Kinase

Catalog No.: RP03306LQ **Recombinant**

## Sequence Information

Species	Gene ID	Swiss Prot
Baculovirus- Insect Cells	5127&21977Q00536&Q8 1	ND76

### Tags

N-GST (CDK16) & N-Flag (Cyclin Y)

### Synonyms

CDK16; PCTAIRE1; PCTK1; Cyclin-dependent kinase 16; Cyclin Y; CCNY; C10orf9; CBCP1; CFP1; Cyclin-Y

## Product Information

### Source

### Purification

≥ 90 % as determined by SDS-PAGE; ≥ 90 % as determined by HPLC.

### Endotoxin

< 1 EU/μg of the protein by LAL method.

### Formulation

Supplied as a 0.22 μm filtered solution in 50 mM HEPES, 200 mM NaCl, 5% glycerol. (pH 7.5). Contact us for customized product form or formulation.

### Reconstitution

Please use running water to thaw it quickly.

## Contact



[www.abclonal.com](http://www.abclonal.com)

## Background

CDK16 is also known as PCTGAIRE, PCTAIRE1, and PCTK1, and belongs to the cyclin-dependent serine/threonine protein kinase family. CDK16 plays important roles in various cellular processes. It regulates cell cycle including G1, S, G2, and G2/M arrest and control cell cycle through interactions with other molecules or signaling pathways. It also plays a vital role in cell growth and proliferation, particularly in cancer cells. And CDK16 was also shown to participate in many cell death pathways, including apoptosis, necrosis, autophagy, and senescence. Cyclin Y has been identified as a CDK16 binding partner in human cells, including various cancers. The binding of CCNY to CDK16 is essential for spermatogenesis.

## Basic Information

### Description

Recombinant Human CDK16&Cyclin Y Protein is produced by Baculovirus-Insect Cells expression system. The target protein is expressed with sequence (Met1-Phe496 (CDK16) & Met1-Ser341 (Cyclin Y)) of Human CDK16&CCNY (Accession #Q00536&Q8ND76) fused with a N-GST (CDK16) & N-Flag (Cyclin Y) tag.

### Bio-Activity

The activity of CDK16/Cyclin Y is based on the MSA technology, and the content and ratio of the substrate and the product are directly separated and detected in real time and dynamically by the different migration rates of the substrate and the product after the enzymatic reaction.

### Shipping

The product is shipped at ambient temperature. Upon receipt, store it immediately at the temperature recommended below.

### Operational Notes

For your safety and health, please wear a lab coat and disposable gloves for handling.

### Storage

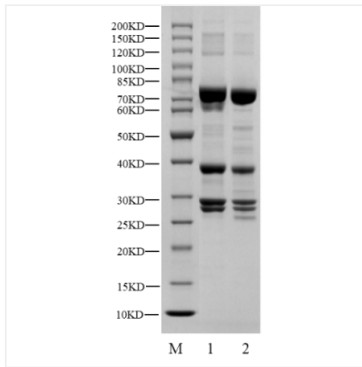
Store at -70°C. This product is stable at ≤ -70°C for up to 1 year from the date of receipt. For optimal storage, aliquot into smaller quantities after centrifugation and store at recommended temperature.

Aliquots below 10 μL are not advisable. Product must not be stored in diluted solutions. Avoid repeated freeze-thaw cycles.

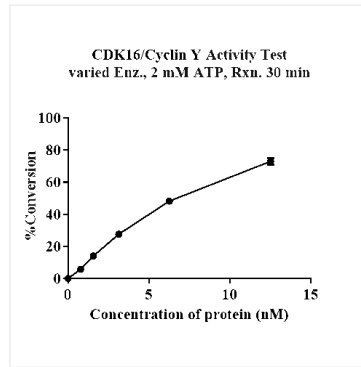
Avoid repeated freeze/thaw cycles.

\* For your safety and health, please wear a lab coat and disposable gloves when handling.

## Validation Data



Recombinant Human CDK16&Cyclin Y Kinase was determined by SDS-PAGE under reducing (R) and non-reducing (NR) conditions.



The activity of CDK16/Cyclin Y is based on the MSA technology, and the content and ratio of the substrate and the product are directly separated and detected in real time and dynamically by the different migration rates of the substrate and the product after the enzymatic reaction.