

RP03293LQ

Leader in Biomolecular Solutions for Life Science



Recombinant Human Myoglobin Protein

Catalog No.: RP03293LQ **Recombinant**

Sequence Information

Species	Gene ID	Swiss Prot
E.coli	4151	P02144

Tags

C-His

Synonyms

Myoglobin; MB; MGC13548; PVALB; MYOSB

Product Information

Source	Purification
	≥ 95 % as determined by SDS-PAGE.

Endotoxin

< 1 EU/μg of the protein by LAL method.

Formulation

Supplied as a 0.22 μm filtered solution of PBS, 350 mM NaCl, 5% Trehalose, 5% Mannitol, 0.02% Tween 80, 1 mM EDTA, pH 7.4. Contact us for customized product form or formulation.

Reconstitution

Contact



www.abclonal.com

Background

Myoglobin is an iron- and oxygen-binding protein found in the cardiac and skeletal muscle tissue of vertebrates in general and in almost all mammals. Myoglobin is distantly related to hemoglobin. Compared to hemoglobin, myoglobin has a higher affinity for oxygen and does not have cooperative binding with oxygen like hemoglobin does. High concentrations of myoglobin in muscle cells allow organisms to hold their breath for a longer period of time. Myoglobin is released from damaged muscle tissue. The released myoglobin enters the bloodstream, where high levels may indicate rhabdomyolysis. The myoglobin is filtered by the kidneys, but is toxic to the renal tubular epithelium and so may cause acute kidney injury.

Basic Information

Description

Recombinant Human Myoglobin Protein is produced by E.coli expression system. The target protein is expressed with sequence (Met1-Gly154) of human Myoglobin (Accession #P02144) fused with His tag at the C-terminus.

Bio-Activity

Shipping

The product is shipped at ambient temperature. Upon receipt, store it immediately at the temperature recommended below.

Operational Notes

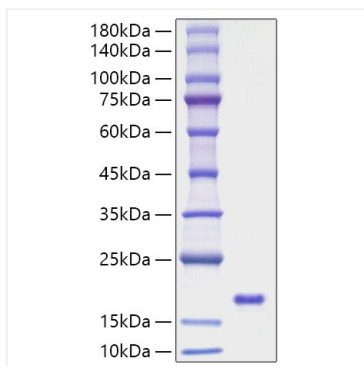
For your safety and health, please wear a lab coat and disposable gloves for handling.

Storage

Store at -70°C. This product is stable at ≤ -70°C for up to 1 year from the date of receipt. For optimal storage, aliquot into smaller quantities after centrifugation and store at recommended temperature. Avoid repeated freeze-thaw cycles. Avoid repeated freeze/thaw cycles.

* For your safety and health, please wear a lab coat and disposable gloves when handling.

Validation Data



Recombinant Human Myoglobin Protein was determined by SDS-PAGE under reducing conditions with Coomassie Blue.