

RP03257

Leader in Biomolecular Solutions for Life Science



# Recombinant Human ADPRH Protein

Catalog No.: RP03257 **Recombinant**

## Sequence Information

Species	Gene ID	Swiss Prot
E.coli	141	P54922

### Tags

N-His

### Synonyms

ADPRH; ARH1; ADP-ribosylhydrolase  
ARH1; ADP-ribose-L-arginine cleaving enzyme

## Product Information

Source	Purification
E.coli	≥ 90 % as determined by SDS-PAGE.

### Endotoxin

Please contact us for more information.

### Formulation

Lyophilized from a 0.22 µm filtered solution of PBS, pH 7.4. Contact us for customized product form or formulation.

### Reconstitution

Centrifuge the vial before opening. Reconstitute to a concentration of 0.1-0.5 mg/mL in sterile distilled water. Avoid vortex or vigorously pipetting the protein. For long term storage, it is recommended to add a carrier protein or stabilizer (e.g. 0.1% BSA, 5% HSA, 10% FBS or 5% Trehalose), and aliquot the reconstituted protein solution to minimize free-thaw cycles.

## Contact



[www.abclonal.com](http://www.abclonal.com)

## Background

ADPRH belongs to the ADP-Ribosylglycohydrolase family. ADPRH specifically acts as an arginine mono-ADP-ribosylhydrolase by mediating the removal of mono-ADP-ribose attached to arginine residues on proteins. These reactions are related to cell signaling and the control of many cell processes, such as DNA repair and cell apoptosis.

## Basic Information

### Description

Recombinant Human ADPRH Protein is produced by E.coli expression system. The target protein is expressed with sequence (Met1-Leu351) of human ADPRH (Accession #NP\_001116.1) fused with His tag at the N-terminus.

### Bio-Activity

### Shipping

The product is shipped at ambient temperature. Upon receipt, store it immediately at the temperature recommended below.

### Operational Notes

For your safety and health, please wear a lab coat and disposable gloves for handling.

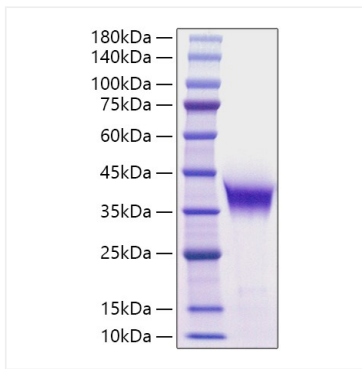
### Storage

Store at -20°C. Store the lyophilized protein at -20°C to -80 °C up to 1 year from the date of receipt. After reconstitution, the protein solution is stable at -20°C for 3 months, at 2-8°C for up to 1 week. Avoid repeated freeze/thaw cycles.

\* For your safety and health, please wear a lab coat and disposable gloves when handling.

## Validation Data

---



Recombinant Human ADPRH Protein was determined by SDS-PAGE under reducing conditions with Coomassie Blue.