

RP03255

Leader in Biomolecular Solutions for Life Science



# Recombinant Human REG3G Protein

Catalog No.: RP03255 **Recombinant**

## Sequence Information

Species	Gene ID	Swiss Prot
HEK293 cells	130120	Q6UW15

### Tags

C-His

### Synonyms

Regenerating islet-derived protein 3-gamma; REG-3-gamma; REG3G; Pancreatitis-associated protein 1B; PAP1B

## Product Information

Source	Purification
HEK293 cells	≥ 95 % as determined by SDS-PAGE.

### Endotoxin

< 1 EU/μg of the protein by LAL method.

### Formulation

Lyophilized from a 0.22 μm filtered solution of PBS, pH 7.4. Contact us for customized product form or formulation.

### Reconstitution

Centrifuge the vial before opening. Reconstitute to a concentration of 0.1-0.5 mg/mL in sterile distilled water. Avoid vortex or vigorously pipetting the protein. For long term storage, it is recommended to add a carrier protein or stabilizer (e.g. 0.1% BSA, 5% HSA, 10% FBS or 5% Trehalose), and aliquot the reconstituted protein solution to minimize free-thaw cycles.

## Contact



[www.abclonal.com](http://www.abclonal.com)

## Background

Regenerating islet-derived 3 gamma (REG3G), also known as pancreatitis-associated protein 1B (PAP1B), is a member of the secreted Reg superfamily and contains one typical C-type lectin domain. REG3G is expressed weakly in pancreas, strongly in intestinal tract, but not in hyperplastic islets. REG3G might be a stress protein involved in the control of bacterial proliferation. It was indicated that REG3G specifically targets Gram-positive bacteria because it binds to their surface peptidoglycan layer, and serves as one of several antimicrobial peptides produced by paneth cells via stimulation of toll-like receptors (TLRs) by pathogen-associated molecular patterns (PAMPs).

## Basic Information

### Description

Recombinant Human REG3G Protein is produced by HEK293 cells expression system. The target protein is expressed with sequence (Met1-Asp175) of human REG3G (Accession #Q6UW15) fused with His tag at the C-terminus.

### Bio-Activity

### Shipping

The product is shipped at ambient temperature. Upon receipt, store it immediately at the temperature recommended below.

### Operational Notes

For your safety and health, please wear a lab coat and disposable gloves for handling.

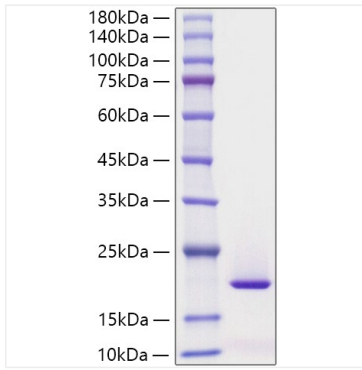
### Storage

Store at -20°C. Store the lyophilized protein at -20°C to -80 °C up to 1 year from the date of receipt. After reconstitution, the protein solution is stable at -20°C for 3 months, at 2-8°C for up to 1 week. Avoid repeated freeze/thaw cycles.

\* For your safety and health, please wear a lab coat and disposable gloves when handling.

## Validation Data

---



Recombinant Human REG3G Protein was determined by SDS-PAGE under reducing conditions with Coomassie Blue.