

RP03215LQ

Leader in Biomolecular Solutions for Life Science



Recombinant Human Pyruvate kinase PKM/PKM protein

Catalog No.: RP03215LQ **Recombinant**

Sequence Information

| Species | Gene ID | Swiss Prot |
|----------------|---------|------------|
| <i>E. coli</i> | 5315 | P14618 |

Tags

N-His

Synonyms

Pyruvate kinase PKM; CTHBP; OIP-3; THBP1

Product Information

| Source | Purification |
|----------------|-----------------------------------|
| <i>E. coli</i> | ≥ 95 % as determined by SDS-PAGE. |

Endotoxin

< 1 EU/μg of the protein by LAL method.

Formulation

Supplied as a 0.22 μm filtered solution in 20mM Tris-HCl, 50mM NaCl, 0.05% Brij-35, 1mM DTT, pH7.5. Contact us for customized product form or formulation.

Reconstitution

Contact



www.abclonal.com

Background

Pyruvate kinase isoform M2 (PKM2) is a member of the pyruvate kinase (PK) family, a pivotal glycolytic enzyme that is consistently changed during tumorigenesis. PKM2 is expressed in some differentiated tissues, such as lung, fat tissue, retina, and pancreatic islets. As the rate-controlling enzyme in glycolysis, PKM2, has also been found to be expressed in embryonic, proliferating, and tumor cells, and it has been considered to be crucial for the metabolism and growth of tumor cells. Recent studies have shown that PKM2 promotes cell proliferation and suppresses cell apoptosis in various tumors. In addition, it has been reported that the PKM2 knockdown affects the Akt and ERK protein kinases.

Basic Information

Description

Recombinant Human PKM2 Protein is produced by *E. coli* expression system. The target protein is expressed with sequence (Ser2-Pro531) of human PKM2 (Accession #NP_002645.3) fused with His tag at the N-terminus.

Bio-Activity

Shipping

The product is shipped at ambient temperature. Upon receipt, store it immediately at the temperature recommended below.

Operational Notes

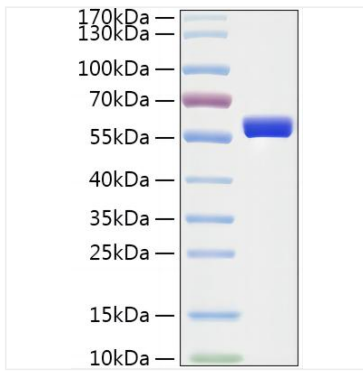
For your safety and health, please wear a lab coat and disposable gloves for handling.

Storage

Store at -70°C. This product is stable at ≤ -70°C for up to 1 year from the date of receipt. For optimal storage, aliquot into smaller quantities after centrifugation and store at recommended temperature. Avoid repeated freeze-thaw cycles. Avoid repeated freeze/thaw cycles.

* For your safety and health, please wear a lab coat and disposable gloves when handling.

Validation Data



Recombinant Human PKM2 protein was determined by SDS-PAGE under reducing conditions with Coomassie Blue.