

RP03206LQ

Leader in Biomolecular Solutions for Life Science



www.abclonal.com

Recombinant Human XPNPEP1 Protein

Catalog No.: RP03206LQ **Recombinant**

Sequence Information

Species	Gene ID	Swiss Prot
<I>E. coli</I>	7511	Q9NQW7

Tags

C-His

Synonyms

Xaa-Pro Aminopeptidase 1;
Aminoacylproline Aminopeptidase;
Cytosolic Aminopeptidase P; Soluble
Aminopeptidase P; sAmp; X-Pro
Aminopeptidase 1; X-Prolyl
Aminopeptidase 1 Soluble; XPNPEP1;
XPNPEPL; XPNPEPL1

Product Information

Source	Purification
<I>E. coli</I>	≥ 85 % as determined by SDS-PAGE.

Endotoxin

< 1 EU/μg of the protein by LAL
method.

Formulation

Supplied as a 0.22 μm filtered solution
in 20mM PB, 8% Sucrose, 100mM
NaCl, 10% Glycerol, 0.05% Tween80,
0.02% Tween20, pH 7.5. Contact us for
customized product form or
formulation.

Reconstitution

Background

X-Prolyl Aminopeptidase (XPNPEP1) is a proline-specific metalloaminopeptidase that specifically catalyzes the removal of any unsubstituted N-terminal amino acid that is adjacent to a penultimate proline residue. Because of its specificity toward proline, it has been suggested that X-Prolyl Aminopeptidase is important in the maturation and degradation of peptide hormones, neuropeptides, and tachykinins, as well as in the digestion of otherwise resistant dietary protein fragments, thereby complementing the pancreatic peptidases. X-Prolyl Aminopeptidase is a member of the M24 family of metalloproteases, which also contains methionine aminopeptidases, X-Pro dipeptidase, aminopeptidase P2, aminopeptidase P homolog, proliferation-associated protein 1, and suppressor of Ty homolog or chromatin-specific transcription elongation factor large subunit. It is a soluble enzyme, in contrast to the GPI-anchored Aminopeptidase P2 encoded by XPNPEP2. Deficiency of X-Prolyl Aminopeptidase results in excretion of large amounts of imino-oligopeptides in urine. Human Aminopeptidase P1 is widely expressed. The amino acid sequence of human X-Prolyl Aminopeptidase is 99%, 97%, 95%, 74% and 73% identical to that of canine, bovine, mouse/rat, Xenopus and zebrafish, respectively.

Basic Information

Description

Recombinant Human XPNPEP1 Protein is produced by *E. coli* expression system. The target protein is expressed with sequence (Pro2-His623) of Human XPNPEP1 (Accession #NP_001311061.1) fused with 6×His tag at the C-terminus.

Bio-Activity

Shipping

The product is shipped at ambient temperature. Upon receipt, store it immediately at the temperature recommended below.

Operational Notes

For your safety and health, please wear a lab coat and disposable gloves for handling.

Storage

Store at -70°C. This product is stable at ≤ -70°C for up to 1 year from the date of receipt. For optimal storage, aliquot into smaller quantities after centrifugation and store at recommended temperature. Avoid repeated freeze-thaw cycles. Avoid repeated freeze/thaw cycles.

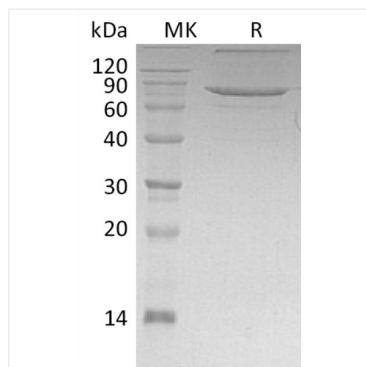
Contact



www.abclonal.com

* For your safety and health, please wear a lab coat and disposable gloves when handling.

Validation Data



Recombinant Human XPNPEP1 Protein was determined by SDS-PAGE under reducing conditions with Coomassie Blue.