

RP03173

Leader in Biomolecular Solutions for Life Science



Recombinant Human NF-L/NEFL Protein

Catalog No.: RP03173

Recombinant

Sequence Information

Species	Gene ID	Swiss Prot
<I>E. coli</I>	4747	P07196

Tags

N-His

Synonyms

NEFL;CMT1F;CMT2E;NF-L;NF68;NFL;PPP1R110

Product Information

Source	Purification
<I>E. coli</I>	≥ 95 % as determined by SDS-PAGE.

Endotoxin

< 1 EU/μg of the protein by LAL method.

Formulation

Lyophilized from a 0.22 μm filtered solution of PBS, pH 7.4. Contact us for customized product form or formulation.

Reconstitution

Centrifuge the vial before opening. Reconstitute to a concentration of 0.1-0.5 mg/mL in sterile distilled water. Avoid vortex or vigorously pipetting the protein. For long term storage, it is recommended to add a carrier protein or stabilizer (e.g. 0.1% BSA, 5% HSA, 10% FBS or 5% Trehalose), and aliquot the reconstituted protein solution to minimize free-thaw cycles.

Background

Neurofilaments usually contain three intermediate filament proteins: NEFL, NEFM, and NEFH which are involved in the maintenance of neuronal caliber. May additionally cooperate with the neuronal intermediate filament proteins PRPH and INA to form neuronal filamentous networks (By similarity).

Basic Information

Description

Recombinant Human NF-L/NEFL Protein is produced by *E. coli* expression system. The target protein is expressed with sequence (Ser2-Asp543) of human NF-L/NEFL (Accession #NP_006149.2) fused with a 6×His tag at the N-terminus.

Bio-Activity

Immobilized Human NFL, His Tag (Cat. No. RP03173) at 1 μg/mL (100 μL/well) can bind Anti NEFL Antibody with a linear range of 0.002-0.063 μg/mL (QC tested).

Storage

Store at -20°C. Store the lyophilized protein at -20°C to -80 °C up to 1 year from the date of receipt. After reconstitution, the protein solution is stable at -20°C for 3 months, at 2-8°C for up to 1 week. Avoid repeated freeze/thaw cycles.

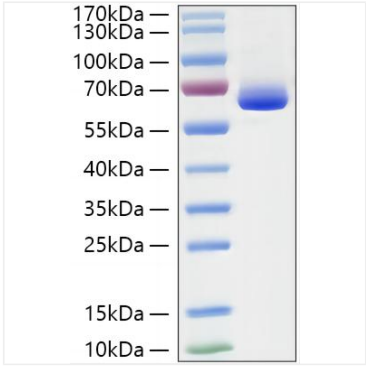
Contact



www.abclonal.com

* For your safety and health, please wear a lab coat and disposable gloves when handling.

Validation Data



Recombinant Human NF-L/NEFL
Protein was determined by SDS-
PAGE under reducing conditions with
Coomassie Blue.