

RP03149LQ

Leader in Biomolecular Solutions for Life Science



Recombinant Human CCR2/CD192 Protein

Catalog No.: RP03149LQ

Recombinant

Sequence Information

Species	Gene ID	Swiss Prot
HEK293 cells	729230	P41597-2

Tags

No tag

Synonyms

C-C CKR-2; CCR-2; CCR2; MCP-1-R;
CMKBR2; CCR2

Product Information

Source	Purification
HEK293 cells	> 95% as determined by HPLC

Endotoxin

< 1 EU/μg of the protein by LAL method.

Formulation

Supplied as 0.22μm filtered solution in PBS (pH 7.4). If you need it for immunization, Do Not use any adjuvant.

Reconstitution

Background

The chemokine (C-C motif) receptor 2B (CCR2B) is one of the two isoforms of the receptor for monocyte chemoattractant protein-1 (CCL2), the major chemoattractant for monocytes, involved in an array of chronic inflammatory diseases. The actin-binding protein filamin A (FLNa) as a protein that associates with the carboxyl-terminal tail of CCR2B. FLNa emerges as an important protein for controlling the internalization and spatial localization of the CCR2B receptor in different dynamic membrane structures.

Basic Information

Description

Recombinant Human CCR2/CD192 Protein is produced by HEK293 cells expression system. The target protein is expressed with sequence (Met1-Leu360) of Human CCR2 (Accession #NP_001116868.1) .

Bio-Activity

Immobilized Human CCR2 at 5μg/ml (100μl/Well) on the plate. Dose response curve for Anti-CCR2b Antibody, hFc Tag with the EC50 of 12.0ng/ml determined by ELISA.

Storage

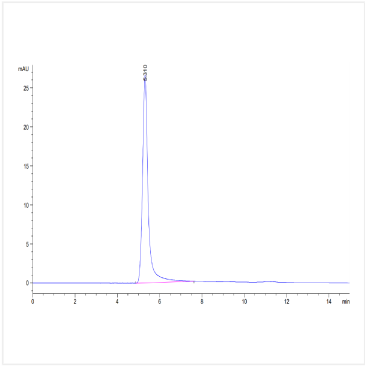
Store at -70°C. This product is stable at ≤ -70°C for up to 1 year from the date of receipt. For optimal storage, aliquot into smaller quantities after centrifugation and store at recommended temperature. Avoid repeated freeze-thaw cycles. Avoid repeated freeze/thaw cycles.

Contact

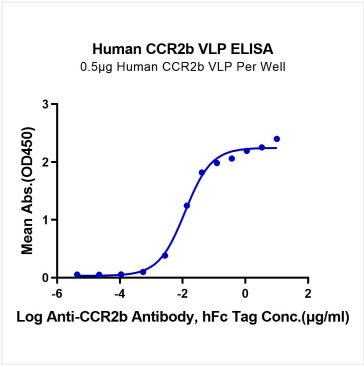


www.abclonal.com

* For your safety and health, please wear a lab coat and disposable gloves when handling.



The purity of Human CCR2 is greater than 95% as determined by SEC-HPLC.



Immobilized Human CCR2 at 5µg/ml (100µl/Well) on the plate. Dose response curve for Anti-CCR2b Antibody, hFc Tag with the EC50 of 12.0ng/ml determined by ELISA.