

RP03148LQ

Leader in Biomolecular Solutions for Life Science



Recombinant Human Proto-oncogene tyrosine-protein kinase Src/SRC Protein

Catalog No.: RP03148LQ

Recombinant

Sequence Information

Species Gene ID Swiss Prot

Baculovirus- 6714 P12931-1
Infected Sf9
Cells

Tags

N-His-GST tag

Synonyms

ASV; c-SRC; p60-Src; SRC1; pp60c-src

Product Information

Source Purification

Baculovirus- > 90% by SDS-
Infected Sf9 Cells PAGE

Endotoxin

<0.1EU/μg

Formulation

Solution in sterile 50mM Tris, 100mM
NaCl, pH 8.0, 20% glycerol, 0.3mM
DTT.

Reconstitution

Background

Proto-oncogene tyrosine-protein kinase SRC is a hydrophobic protein belonging to the SRC family kinase including nine members that is a family of non-receptor tyrosine kinases. SRC protein may exist in different forms: C-SRC and V-SRC. C-SRC is only activated under certain circumstances where it is required such as growth factor signaling, while V-SRC is constitutively active as opposed to normal SRC (C-SRC). Thus, V-SRC is an instructive example of an oncogene protein kinase whereas C-SRC is a proto-oncogene protein kinase. Inhibition of SRC with NR2A tyrosine phosphorylation mediated by PSD-95 may contribute to the lithium-induced downregulation of NMDA receptor function and provide neuroprotection against excitotoxicity.

Basic Information

Description

Recombinant Human Proto-oncogene tyrosine-protein kinase Src/SRC Protein is produced by Baculovirus-Infected Sf9 expression system. The target protein is expressed with sequence (Met 1-Leu 536) of Human Proto-oncogene tyrosine-protein kinase Src/SRC (Accession #NP_005408.1) fused with a N-His-GST tag.

Bio-Activity

The specific activity was determined to be > 80 nmol/min/mg using Poly(Glu:Tyr) 4:1 as substrate.

Storage

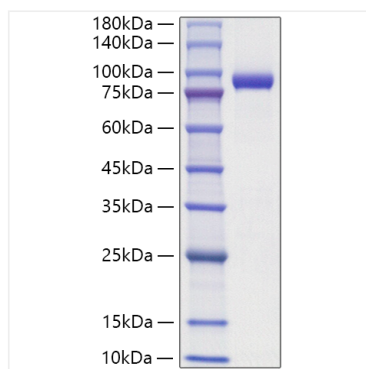
Store at -70°C. This product is stable at ≤ -70°C for up to 1 year from the date of receipt. For optimal storage, aliquot into smaller quantities after centrifugation and store at recommended temperature. Avoid repeated freeze-thaw cycles. Avoid repeated freeze/thaw cycles.

Contact



www.abclonal.com

Validation Data



Recombinant Human Src Protein was determined by SDS-PAGE with Coomassie Blue, showing a band at 75-100 kDa.