

RP02987LQ

Leader in Biomolecular Solutions for Life Science



Recombinant Human PGK1 Protein

Catalog No.: RP02987LQ

Recombinant

Sequence Information

Species	Gene ID	Swiss Prot
HEK293 cells	5230	P00558

Tags

C-His

Synonyms

Phosphoglycerate kinase 1;Cell migration-inducing gene 10 protein;Primer recognition protein 2;PGK1;PGKA

Product Information

Source	Purification
HEK293 cells	> 95% by SDS-PAGE.

Endotoxin

<1EU/μg

Formulation

Supplied as a 0.2 μm filtered solution of 20mM Tris-HCl, 150mM NaCl, 20% Glycerol, pH 8.0.

Reconstitution

Background

Phosphoglycerate kinase 1(PGK1) is an enzyme. It is mainly expressed in spermatogonia and Localized on the principle piece in the sperm. Its expression significantly decreased in the testis of elderly men. PGK1 involved in a critical energy-producing process known as glycolysis. It helps carry out a chemical reaction that converts a molecule called 1,3-diphosphoglycerate, which is produced during the breakdown of glucose, to another molecule called 3-phosphoglycerate during glycolysis. PGK1 may also act as a cofactor for polymerase alpha. The protein has been identified as a moonlighting protein based on its ability to perform mechanistically distinct functions.

Basic Information

Description

Recombinant Human PGK1 Protein is produced by HEK293 cells expression system. The target protein is expressed with sequence (Ser2-Ile417) of human PGK1 (Accession #NP_000282.1) fused with a 6×His tag at the C-terminus.

Bio-Activity

Storage

Store at -70°C. This product is stable at ≤ -70°C for up to 1 year from the date of receipt. For optimal storage, aliquot into smaller quantities after centrifugation and store at recommended temperature. Avoid repeated freeze-thaw cycles. Avoid repeated freeze/thaw cycles.

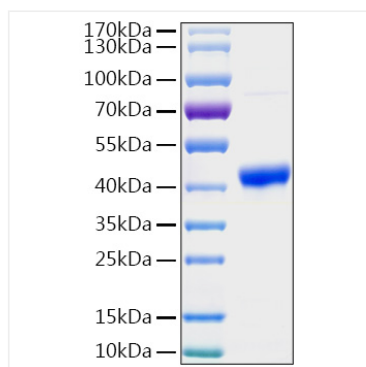
Contact



www.abclonal.com

* For your safety and health, please wear a lab coat and disposable gloves when handling.

Validation Data



Recombinant Human PGK1 Protein was determined by SDS-PAGE with Coomassie Blue, showing a band at 37-50 KDa.