

RP02977LQ

Leader in Biomolecular Solutions for Life Science



Recombinant Human GTPase KRas/KRAS (G13C) Protein

Catalog No.: RP02977LQ **Recombinant**

Sequence Information

Species	Gene ID	Swiss Prot
<I>E. coli</I>	3845	P01116-2

Tags
N-8His

Synonyms

NS; NS3; OES; CFC2; RALD; K-Ras; KRAS1; KRAS2; RASK2; KI-RAS; C-K-RAS; K-RAS2A; K-RAS2B; K-RAS4A; K-RAS4B; K-Ras 2; 'C-K-RAS; c-Ki-ras; c-Ki-ras2

Product Information

Source	Purification
<I>E. coli</I>	≥ 95 % as determined by SDS-PAGE.

Endotoxin

Please contact us for more information.

Formulation

Supplied as a 0.22 µm filtered solution in 20mM Tris, 150mM NaCl, 1mM DTT, 10% glycerol, pH7.4

Reconstitution

Background

Basic Information

Description

Recombinant Human GTPase KRas/KRAS (G13C) Protein is produced by *E. coli* expression system. The target protein is expressed with sequence of Human GTPase KRas/KRAS (G13C) (Accession #) fused with N-terminal 8x his tag+ TEV cleavage site and C-terminal Avi tag .

Bio-Activity

KRAS-G13C activity test using HTRF method.

Shipping

The product is shipped at ambient temperature. Upon receipt, store it immediately at the temperature recommended below.

Operational Notes

For your safety and health, please wear a lab coat and disposable gloves for handling.

Storage

Store at -70°C. This product is stable at ≤ -70°C for up to 1 year from the date of receipt. For optimal storage, aliquot into smaller quantities after centrifugation and store at recommended temperature. Avoid repeated freeze-thaw cycles. Avoid repeated freeze/thaw cycles.

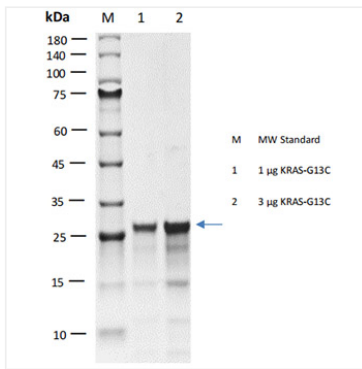
Contact



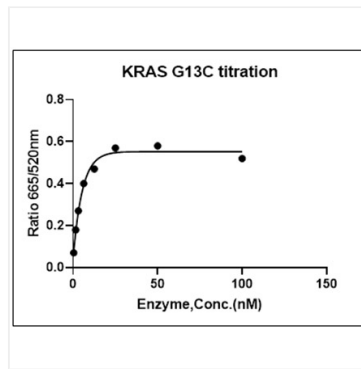
www.abclonal.com

* For your safety and health, please wear a lab coat and disposable gloves when handling.

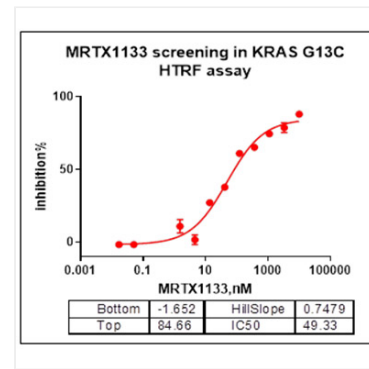
Validation Data



Recombinant Human GTPase KRas/KRAS (G13C) Protein was determined by SDS-PAGE under reducing conditions with Coomassie Blue.



KRAS-G13C activity test using HTRF method. The KRAS-G13C activity was assayed with HTRF technology. The reaction was performed by incubating the KRAS-G13C protein, GTP, cRAF and beads at 25°C for 60 min, then reading Ratio 665/620nm signal with BMG.



KRAS-G13C activity test using HTRF method. The KRAS-G13C activity was assayed with HTRF technology. The reaction was performed by incubating the KRAS-G13C protein, GTP, cRAF and beads at 25°C for 60 min, then reading Ratio 665/620nm signal with BMG.