

RP02964LQ

Leader in Biomolecular Solutions for Life Science



# Recombinant Human GAS-6 Protein

Catalog No.: RP02964LQ **Recombinant**

## Sequence Information

Species	Gene ID	Swiss Prot
HEK293 cells	2621	Q14393-2

### Tags

C-His

### Synonyms

GAS6;AXLLG;AXSF

## Product Information

### Source

HEK293 cells

### Purification

≥ 90 % as determined by SDS-PAGE.

### Endotoxin

< 1 EU/μg of the protein by LAL method.

### Formulation

Supplied as a 0.22 μm filtered solution in 20mM Tris, 500mM NaCl (pH 8.5).

### Reconstitution

## Background

Growth arrest-specific 6, also known as Gas6, is a human gene encoding the Gas6 protein, which was originally found to be upregulated in growth-arrested fibroblasts. Gas6 is a member of the vitamin K-dependent family of proteins expressed in many human tissues and regulates several biological processes in cells, including proliferation, survival and migration, by binding to its receptors Tyro3, Axl and Mer (TAM).

## Basic Information

### Description

Recombinant Human GAS-6 Protein is produced by HEK293 cells expression system. The target protein is expressed with sequence (Ala49-Ala678) of human GAS-6 (Accession #NP\_000811.1) fused with a 6×His tag at the C-terminus.

### Bio-Activity

Immobilized Human GAS6, His Tag at 5μg/ml (100μl/well) on the plate. Dose response curve for Human Axl with the EC<sub>50</sub> of 7.5ng/ml determined by ELISA.

### Shipping

The product is shipped at ambient temperature. Upon receipt, store it immediately at the temperature recommended below.

### Operational Notes

For your safety and health, please wear a lab coat and disposable gloves for handling.

### Storage

Store at -70°C. This product is stable at ≤ -70°C for up to 1 year from the date of receipt. For optimal storage, aliquot into smaller quantities after centrifugation and store at recommended temperature. Avoid repeated freeze-thaw cycles. Avoid repeated freeze/thaw cycles.

## Contact

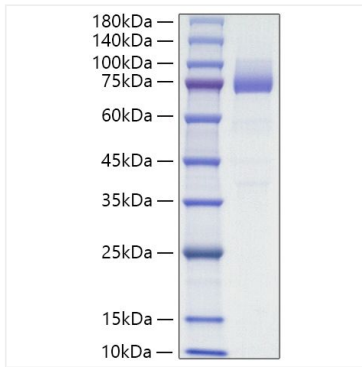


[www.abclonal.com](http://www.abclonal.com)

\* For your safety and health, please wear a lab coat and disposable gloves when handling.

## Validation Data

---



Recombinant Human GAS-6 Protein was determined by SDS-PAGE under reducing conditions with Coomassie Blue.