

RP02941

Leader in Biomolecular Solutions for Life Science



# Recombinant Mouse CXCL13/BLC Protein

Catalog No.: RP02941 **Recombinant**

## Sequence Information

Species	Gene ID	Swiss Prot
HEK293 cells	55985	O55038

### Tags

N-His

### Synonyms

Cxcl13; Blc; Scyb13 , C-X-C motif chemokine 13; B lymphocyte chemoattractant

## Product Information

Source	Purification
	≥ 95 % as determined by Tris-Bis PAGE.

### Endotoxin

< 1 EU/μg of the protein by LAL method.

### Formulation

Lyophilized from 0.22 μm filtered solution in 50mM Tris, 500mM NaCl (pH 7.5). Normally 8% mannitol is added as protectant before lyophilization.

### Reconstitution

Centrifuge the tube before opening. Reconstituting to a concentration more than 100 μg/ml is recommended. Dissolve the lyophilized protein in distilled water.

## Contact



[www.abclonal.com](http://www.abclonal.com)

## Background

Recent studies have implicated chemokines in microglial activation and pathogenesis of neuropathic pain. C-X-C motif chemokine 13 (CXCL13) is a B lymphocyte chemoattractant that activates CXCR5. Using the spinal nerve ligation (SNL) model of neuropathic pain, CXCL13 was persistently upregulated in spinal cord neurons after SNL, resulting in spinal astrocyte activation via CXCR5 in mice.

## Basic Information

### Description

Recombinant Mouse CXCL13/BLC Protein is produced by HEK293 cells expression system. The target protein is expressed with sequence (Ile22-Ala109) of Mouse CXCL13/BLC(Accession #NP\_061354.1) fused with His tag at the N-terminus.

### Bio-Activity

### Shipping

The product is shipped at ambient temperature. Upon receipt, store it immediately at the temperature recommended below.

### Operational Notes

For your safety and health, please wear a lab coat and disposable gloves for handling.

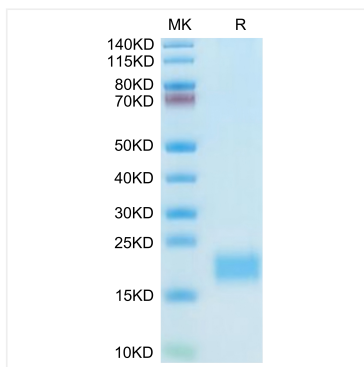
### Storage

Store at -20°C. Store the lyophilized protein at -20°C to -80 °C up to 1 year from the date of receipt. After reconstitution, the protein solution is stable at -20°C for 3 months, at 2-8°C for up to 1 week. Avoid repeated freeze/thaw cycles.

\* For your safety and health, please wear a lab coat and disposable gloves when handling.

## Validation Data

---



Recombinant Mouse CXCL13/BLC Protein was determined by Bis-Tris PAGE under reducing conditions with Coomassie Blue.